

**HOBSONS**  
**BAY CITY**  
COUNCIL

FERGUSON STREET | NORTH WILLIAMSTOWN

---

LEVEL CROSSING REMOVAL - INITIAL IDEAS + OPPORTUNITIES INVESTIGATION  
(AUGUST 2020)

## THE OPPORTUNITY

---

The Level Crossing Removal Project (LXRP) has been undertaking community consultation and assessing different options for the Ferguson Street Level Crossing Removal Project and recently identified that the rail line under the road would be adopted as the preferred option.

Running in parallel with this process, Council has been undertaking its own investigations together with community engagement to help identify potential opportunities at the wider precinct level that could be integrated into the project to deliver a greater range of community benefits and broaden the scope and discussion around the level crossing removal - shifting the project from a road-based traffic and public transport focus to one that has the potential to deliver a greater variety of community improvements.

This is an initial ideas document intended to stimulate discussion only by identifying potential opportunities and suggesting ideas and principles that could be investigated as part of the ongoing design process. It is not a technical document and does not prescribe specific outcomes - but rather has been generated to provide principles, case study examples and a guiding framework for the ongoing design process. It is important to note that the principles and ideas outlined in this document are intended to not be tied to or dependant upon the work being undertaken by the LCRP, but rather to identify opportunities to be considered and discussed as part of the decision making process and that can be adapted and evolved as part of the ongoing design process. Council will continue to liaise with the relevant state agencies and authorities to progress this precinct plan.



---

“As car-based planning came to dominate Melbourne in the post-war period, the rail-centred reasons for removing level crossings and the urban potentials associated with them were sidelined.....rather than being about the creation of urban amenity and value-uplift related to enhanced public transport, the focus was limited to the removal of an impediment to road-based traffic”.....

“the potential cumulative impact of how well each crossing project is carried out, and how far it capitalizes on its potential, is huge in terms of urban transformation”.....

ARCHITECTURE AUSTRALIA SEPT / OCT 2019



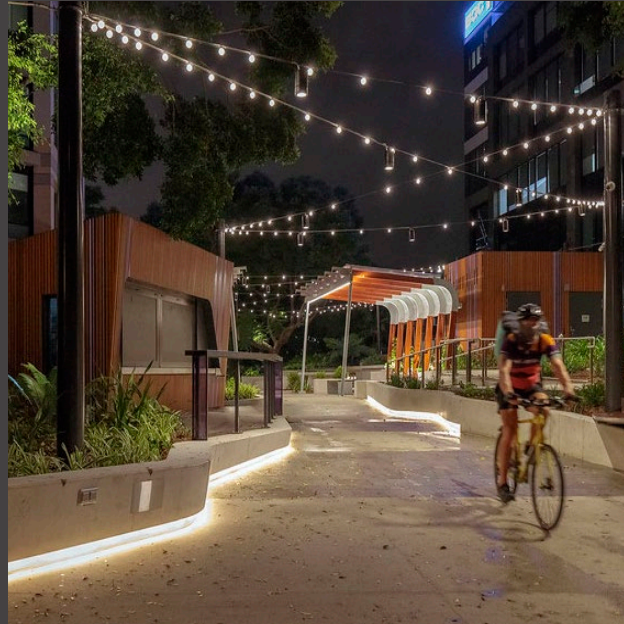
## FERGUSON STREET LEVEL CROSSING REMOVAL

### KEY PRINCIPLES + OPPORTUNITIES



#### Better Spaces + Places

Utilising the project as a catalyst for upgrading and delivering new spaces that will add life and amenity and improve the quality of the public domain around the rail precinct



#### Connecting the Community

Focus on delivering improved movement and safety for all modes of transport and creating a truly integrated multi-modal hub



#### Enhancing Character + Amenity

‘Telling the story’ of the place and finding better ways to actively involve the community to create a stronger sense of identity + ownership over the design and outcomes



# PLACES + SPACES

BETTER PLACES  
+ SPACES

## KEY IDEAS + PRINCIPLES

- Utilising the project as a catalyst for upgrading existing parkland and recreation areas to add amenity and life around the rail station precinct
- Claiming new spaces for public use that were previously reserved for rail and road uses
- Utilise new public spaces to improve pedestrian and cyclist connectivity into and through the precinct
- Focus on creating multiple use spaces that accommodate movement functions but also provide attractive places to sit, gather, relax and play
- Wherever practical, retain existing valued features such as significant trees

KEY PRINCIPLES

FERGUSON STREET LEVEL CROSSING REMOVAL



# CONNECTING



CONNECTING  
THE COMMUNITY

## KEY IDEAS + PRINCIPLES

- Reconfiguration of the surrounding street network and key intersections to improve traffic flows and pedestrian and cyclist safety
- Utilise new spaces created through the level crossing removal to provide a more integrated pedestrian and cyclist network that creates safer and more direct connections into and through the precinct
- Focus on establishing a true multi-modal hub that includes bus shelters and end of journey cycle storage etc.
- A design that prioritises active transport (public transport, walking, cycling)
- Providing visual connectivity and clear wayfinding that improves the walking and cycling experience
- Ensuring that the implemented solution does not introduce any barriers that physically divide the community and reduce connectivity

KEY PRINCIPLES

FERGUSON STREET LEVEL CROSSING REMOVAL



# CHARACTER + AMENITY

ENHANCING  
CHARACTER  
+  
AMENITY

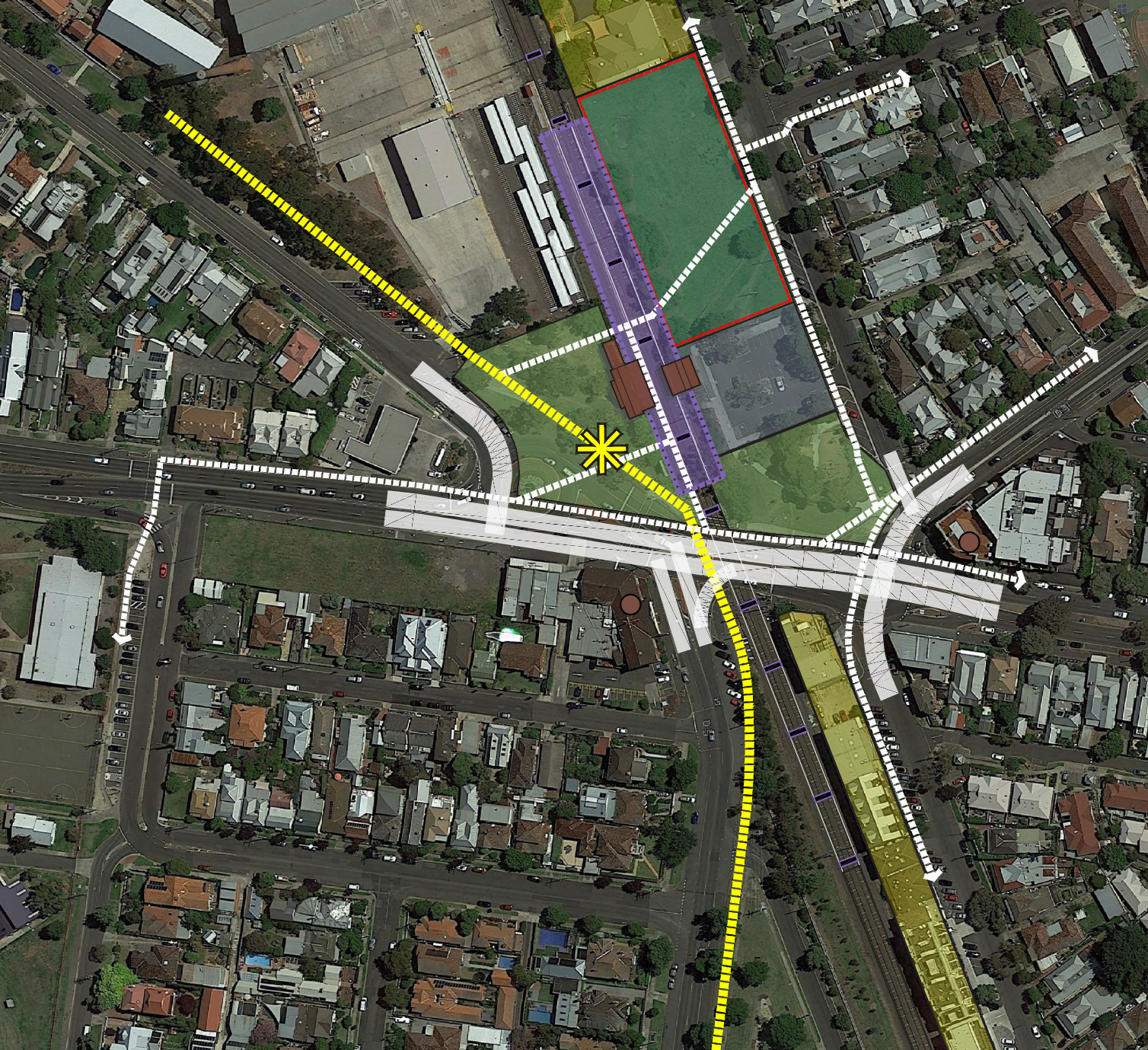
## KEY IDEAS + PRINCIPLES

- Built form and landscape designs to focus on delivering outcomes that enhance the amenity of the area and help to 'tell the story' of the local community
- Existing heritage station buildings to be retained and re-purposed for community based use - wherever practical, other valued features such as existing vegetation are to be retained
- Potential for new rail station and crossing to become key built form landmark and gateway for local area
- Focus on delivering a solution that minimises negative visual impacts to the area
- Finding better ways to actively involve the community to create a stronger sense of identity + ownership over the design and outcomes
- Design solutions that provide universal accessibility and improve the sense of safety, attractiveness and access for all users

## KEY PRINCIPLES

FERGUSON STREET LEVEL CROSSING REMOVAL





-  **FUTURE TRAFFIC MANAGEMENT ARRANGEMENTS TO BE DETERMINED FOLLOWING ASSESSMENT AFTER THE LEVEL CROSSING REMOVAL**
  - Key opportunity to improve traffic flows and pedestrian crossings and safety
-  **CURRENT PLATFORM AND RAIL LINE**
  - Opportunities for future public spaces and community uses through removal of at grade rail line
-  **HERITAGE STATION BUILDINGS**
  - To be retained and be integrated within master plan
  - To be repurposed as community buildings
-  **KEY HERITAGE BUILDINGS**
  - Key heritage buildings surrounding site that need to be considered as part of LXP and precinct planning
-  **INTERFACING COMMERCIAL / RESIDENTIAL**
  - Existing residential and commercial uses directly interfacing with rail line that will be most significantly impacted by level crossing removal
-  **DEPARTMENT OF HEALTH AND HUMAN SERVICES LAND**
  - Parcel included as part of precinct planning for purpose of illustrating potential community outcomes subject to future development
-  **PARKLAND / PUBLIC SPACES**
  - Spaces for potential upgrade, extension and reconfiguration of parkland and community use
  - Potential to relocate existing playground
-  **EXISTING CAR PARKING**
  - Potential to reconfigure or relocate as part of redesign / master plan for precinct
-  **KEY PEDESTRIAN / CYCLIST LINKAGES**
  - Potential to improve key pedestrian and cyclist linkages and crossings and create a safer and more convenient network linking primary flows and destinations
-  **KEY SHARED PATHWAY**
  - Under construction / approved
-  **POTENTIAL MULTI-MODAL BUS + CYCLIST HUB**

EXISTING SITE FEATURES + KEY PROPOSED INFRASTRUCTURE

FERGUSON STREET LEVEL CROSSING REMOVAL





**RECONFIGURATION OF KEY INTERSECTIONS AND STREET DESIGN**  
Final design subject to ongoing engineering and traffic studies



**EAST PARK PRECINCT**



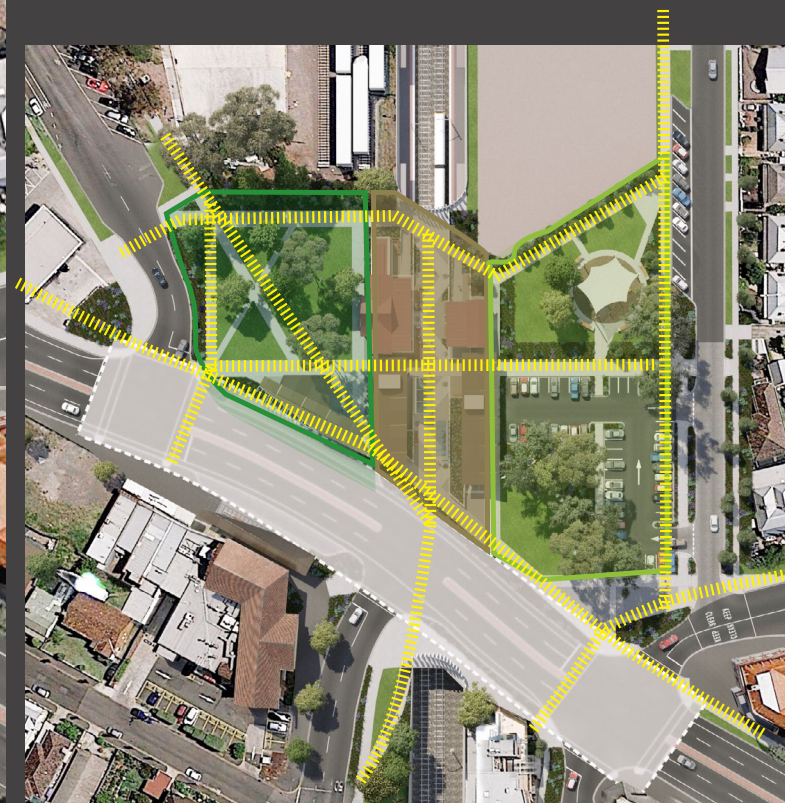
**CENTRAL LINK PRECINCT**



**WEST PARK PRECINCT**



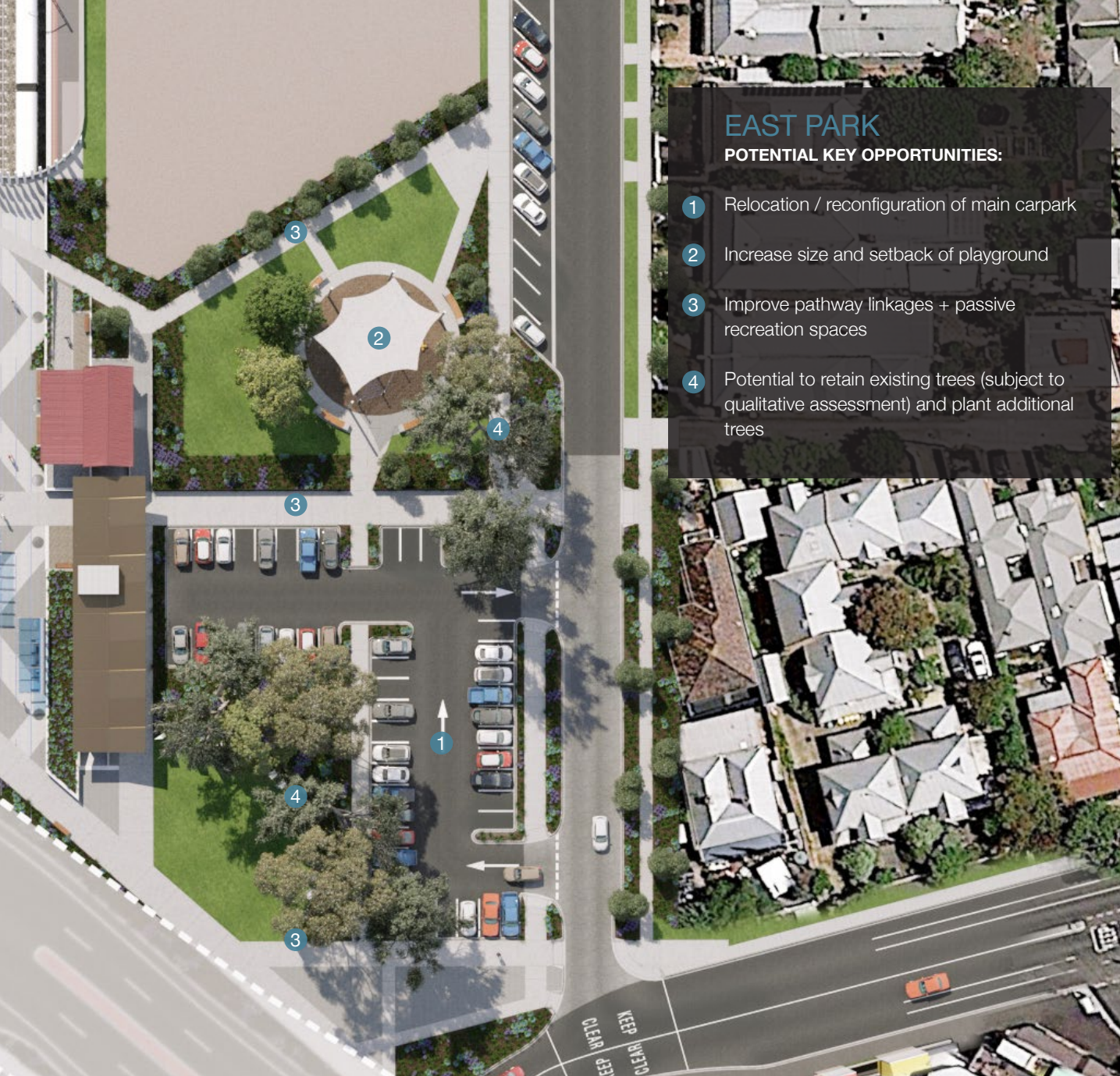
**KEY PEDESTRIAN / CYCLIST LINKAGES**



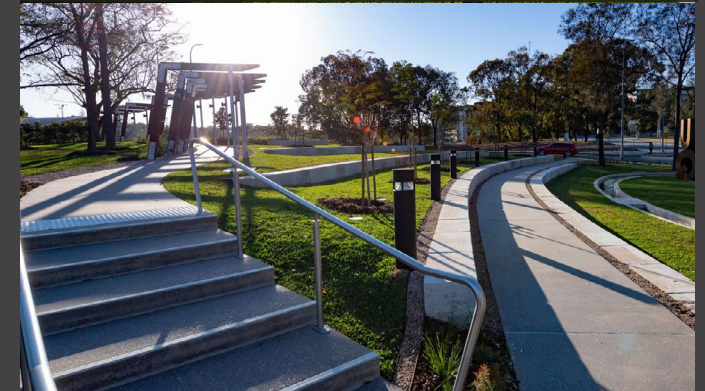
**RAIL STATION PRECINCT - KEY OPPORTUNITY PLAN + PRECINCTS**

**FERGUSON STREET LEVEL CROSSING REMOVAL**

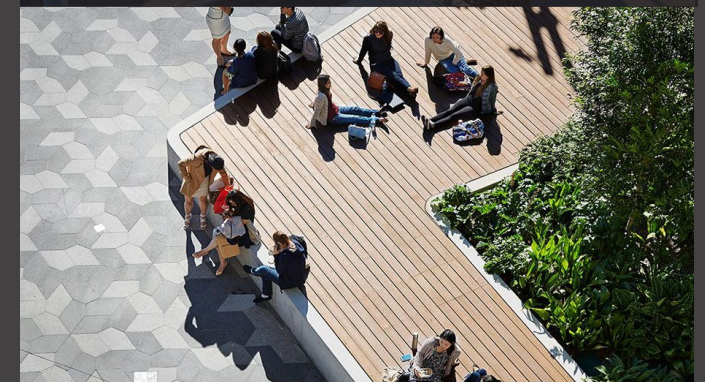




POTENTIAL TO IMPROVE SETBACK AND SIZE OF PLAYGROUND AND PROVIDE NEW PLAY SPACES



IMPROVE PATHWAY CONNECTIONS AND PROVIDE NEW PASSIVE RECREATION SPACES



CREATE NEW PLAZA SPACES AND USE LANDSCAPING AND HARDSCAPE ELEMENTS TO GUIDE PEDESTRIAN MOVEMENTS AND IMPROVE SAFETY

## EAST PARK - OPPORTUNITIES MAPPING

FERGUSON STREET LEVEL CROSSING REMOVAL



## CENTRAL LINK

### POTENTIAL KEY OPPORTUNITIES:

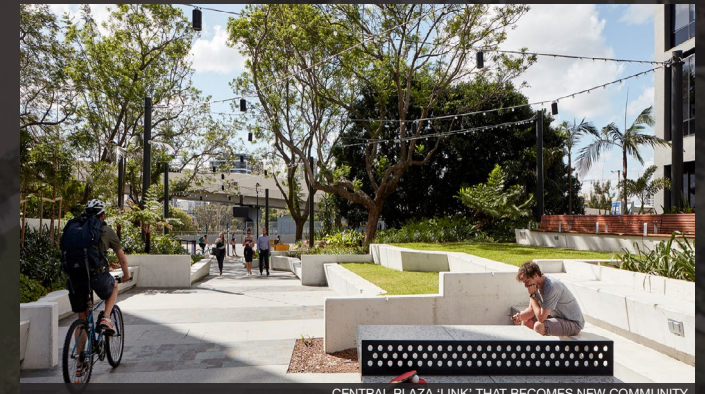
- 1 Retain, upgrade and repurpose heritage buildings for community use / benefit
- 2 Create central plaza 'link' that becomes new community destination and 'ties' precinct together
- 3 Use removal of at grade rail line to improve pathway linkages within and through precinct to enhance pedestrian and cyclist movement and safety
- 4 Create new seating, plaza and community spaces



RETAIN, UPGRADE AND REPURPOSE EXISTING HERITAGE BUILDINGS



CREATE NEW USES AND SPACES THAT BECOME COMMUNITY DESTINATIONS + BRING PEOPLE TOGETHER



CENTRAL PLAZA 'LINK' THAT BECOMES NEW COMMUNITY DESTINATION AND 'TIES' PRECINCT TOGETHER



CREATE NEW SEATING, PLAZA AND COMMUNITY SPACES



IMPROVE PATHWAY LINKAGES WITHIN AND THROUGH PRECINCT TO ENHANCE PEDESTRIAN AND CYCLIST MOVEMENT AND SAFETY

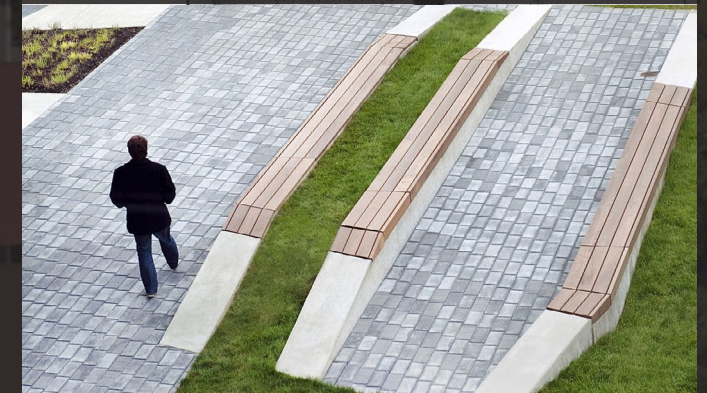
## CENTRAL LINK - OPPORTUNITIES MAPPING

### FERGUSON STREET LEVEL CROSSING REMOVAL





POTENTIAL TO CREATE TRUE MULTIMODAL HUB - ADD BUS SHELTER AND END OF TRIP FACILITIES



IMPROVE PATHWAY LINKAGES WITHIN AND THROUGH PARK TO ENHANCE PEDESTRIAN AND CYCLIST MOVEMENT

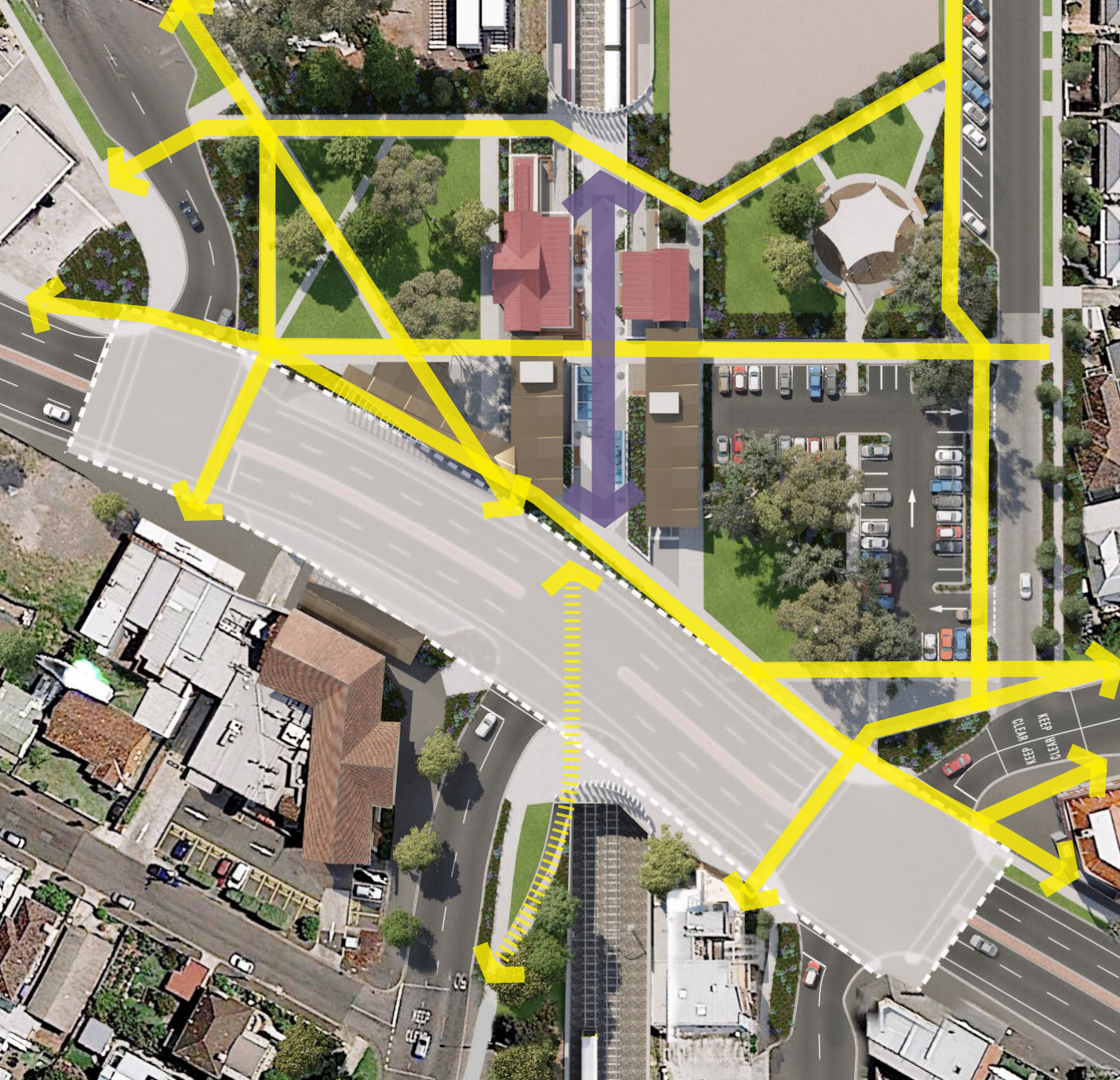


UTILISE RECONFIGURATION OF ROUNDABOUT AND INTERSECTION TO CREATE NEW / LARGER PARK SPACE

## WEST PARK - OPPORTUNITIES MAPPING

FERGUSON STREET LEVEL CROSSING REMOVAL





## ROUNDABOUT / INTERSECTION RECONFIGURATIONS

- Potential redevelopment of road management arrangements to improve pedestrian and cyclist safety - final design subject to ongoing engineering / traffic studies
- Intersection / landscape / hardscape design to reinforce pedestrian flows and improve safety



## CENTRAL LINK

- Central link to create new main pedestrian / cyclist spine and plaza space



## KEY PATHWAY LINKAGES

- Removal of at grade rail line to improve pathway linkages within and through precinct to better reflect desire lines and enhance pedestrian and cyclist movement and safety
- Utilise pathway alignment, hardscape and landscape design to direct people towards main crossings



## POSSIBLE SHARED USE UNDERPASS

INTERSECTIONS, CROSSINGS + LINKAGES - OPPORTUNITIES MAPPING

FERGUSON STREET LEVEL CROSSING REMOVAL





- 1 Main carpark reconfigured to provide space for relocation of playground whilst still retaining existing trees
- 2 Playground relocated to improve amenity, safety and access
- 3 Potential change of pavement / reconfiguration of Power Street intersection to improve pedestrian safety

- 4 Future redesign of key intersections / streets to improve traffic flows and pedestrian crossings / safety
- 5 Capping of rail line extended to form central plaza between heritage buildings to create key community space
- 6 Potential new station buildings and multi-modal hub
- 7 Key pedestrian and cyclist linkages provided through precinct to link spaces and provide improved access, safety and circulation
- 8 Potential shared use underpass

ARTIST IMPRESSION - AERIAL VIEW FROM NORTH  
FERGUSON STREET LEVEL CROSSING REMOVAL





ARTIST IMPRESSION - POTENTIAL COMMUNITY PLAZA SPACE AND HERITAGE / ARTS PRECINCT

FERGUSON STREET LEVEL CROSSING REMOVAL



# HOBSONS BAY CITY COUNCIL

---

This is a visioning document intended to be used for stakeholder and community discussion. All images have been sourced from image libraries on the internet and have copyright issues and should not be used for marketing or commercial purposes.

