

# IRWIN RESERVE UPGRADE

The design aims to create a welcoming space for all ages and abilities with new play equipment and facilities, including picnic shelter, picnic tables and drinking fountain. Relocated closer to existing trees, with a habitat garden, new tree planting, logs and rocks, the natural setting will provide cognitive natureplay opportunities. The Altona Skipper butterfly is the 'theme' featured in timber sculptures and informing play equipment and planting selection.



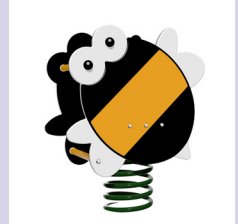
## PLAY EQUIPMENT FOR CHILDREN AGED UP TO 5 YEARS



1 Cubby house with seats and chalkboard



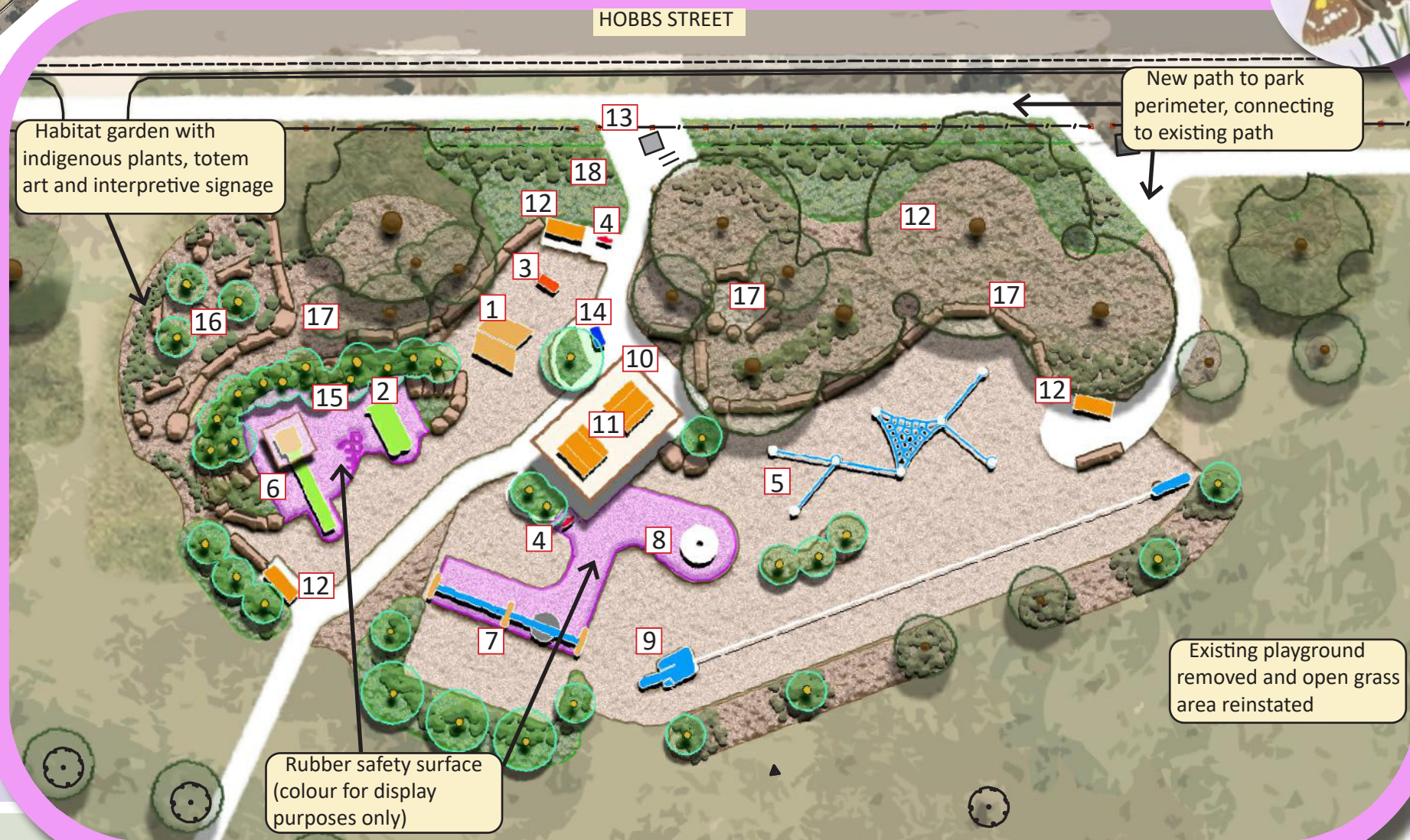
2 Small double slide on mound



3 Bee spring-rocker



4 Flower talk-tubes



10 Picnic shelter



11 Picnic table settings x2



12 Re-use existing seats



13 Rubbish bin, bike hoops



14 Drinking fountain

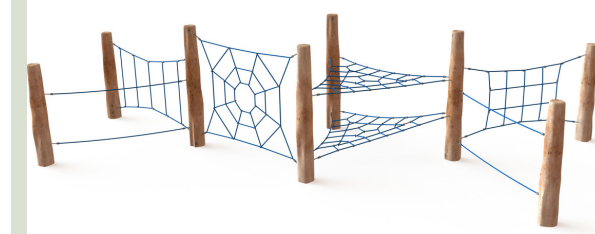


16 Carved timber sculptures

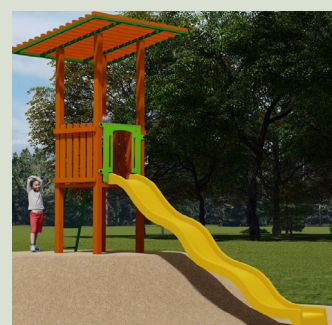


18 Interpretive signage

## PLAY EQUIPMENT FOR CHILDREN AGED 5+ YEARS



5 Rope net climber with timber posts



6 Tall slide with raised platform

## ALL AGES PLAY EQUIPMENT



9 Flying Fox



7 Swing set with toddler, regular and basket seats



8 Accessible carousel

## ART AND NATURE PLAY



15 Mound with rock steps



16 Carved timber sculptures



17 Balancing, stepping and sitting logs



18 Interpretive signage



IRWIN RESERVE PLAYSPACE UPGRADE

FINAL CONCEPT DESIGN

HOBSONSBAY CITY COUNCIL

