

VISION

MARY STREET RESERVE WILL BE AN INTEGRATED FLEXIBLE PUBLIC SPACE WHICH WILL INCLUDE A RANGE OF PASSIVE, INTERACTIVE AND RELAXING ELEMENTS FOR THE WHOLE COMMUNITY.

OBJECTIVES & THEMES

- 1 CREATE SAFE AND FLEXIBLE OPEN SPACES FOR MULTI-FUNCTIONAL USE
- 2 UPGRADE THE PLAYSACE AND PARK AMENITIES
- 3 REDUCE THE AMOUNT OF HARD SURFACES
- 4 IMPROVE PEDESTRIAN ACCESS AND CIRCULATION
- 5 PROVIDE MORE NATURAL SHADE AND BUFFER PLANTING
- 6 INTEGRATE THE RSL BUILDING AND THE RESERVE
- 7 IMPROVE MAINTENANCE

LANDSCAPE ZONES

PICNIC AREA

RECOMMENDATIONS

- Provide picnic facilities including a large shelter, table settings, communal barbecues, a drink fountain, litter bins and bike parking rails.
- The picnic area is appropriately located near the playground to assist parental and guardian supervision of young children.
- The picnic area with help foster a sense of community and social gatherings.

PLAYSPACE

RECOMMENDATIONS

- Provide a new local level playspace with a range of physical challenges to cater for children of all abilities and ages.
- Include a variety of formal play equipment, natural play elements and seating.
- Provide new shade tree planting and sensory garden beds with diverse texture, scent and floral display.
- Provide a new sensory community garden bed to create a buffer between playspace and Cullen Street.

CAR PARK & VEHICULAR ACCESS

RECOMMENDATIONS

- Upgrade existing RSL car park to comprise approximately 10 car parking spaces plus two accessible parking bays), lighting, loading/drop off zone and the RSL bin store.
- Reconfigure the car park entrance from Cullen Street to reduce vehicular movement and minimise road paving throughout the site.
- Incorporate Water Sensitive Urban Design elements such as raingardens and permeable paving to filter stormwater and passively irrigate landscaped areas.

MULTIUSE OPEN GRASS SPACE & CIRCULATION

RECOMMENDATIONS

- Provide a large centralised multi-use outdoor area for recreational activities, market days and community events.
- Provide canopy trees around the perimeter to define the space and provide long term natural shade.
- Ensure all pathways are accessible with appropriate levels of lighting and seating.
- Ensure the space is well catered for with single and three-phase power for community events and market days.
- Remove the motorcycle club building and internal fencing to improve circulation and surveillance.
- Provide external storage for Market Day operations.
- Retain existing level change to lawn bowls.

ENTRIES

RECOMMENDATIONS

- Provide defined entry points for pedestrians with park identification signage, feature paving and planting.

BUFFER PLANTING & EDGE TREATMENT

RECOMMENDATIONS

- Create natural park boundary with trees and shrubs to buffer noise and undesired views to Melbourne Road and Westgate Freeway.
- Remove the existing perimeter fencing along Cullen Street and The Avenue a replace with a new fence.
- Replace the damaged sleeper retaining wall along The Avenue frontage.

VETERANS RESERVE

RECOMMENDATIONS

- Direct views to the Cenotaph from Veterans and Mary Street Reserves as an axial focal point.
- Add a pedestrian access gate in the existing fence between Veterans Reserve and the RSL Eastern Courtyard.
- Improve pedestrian access from Melbourne Road.

MULTIPURPOSE SPORTS COURT

RECOMMENDATIONS

- Provide a basketball/netball sports court with hoops and noise reduction backboard.
- Incorporate seating for casual spectating and observation of games.

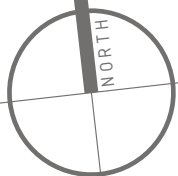
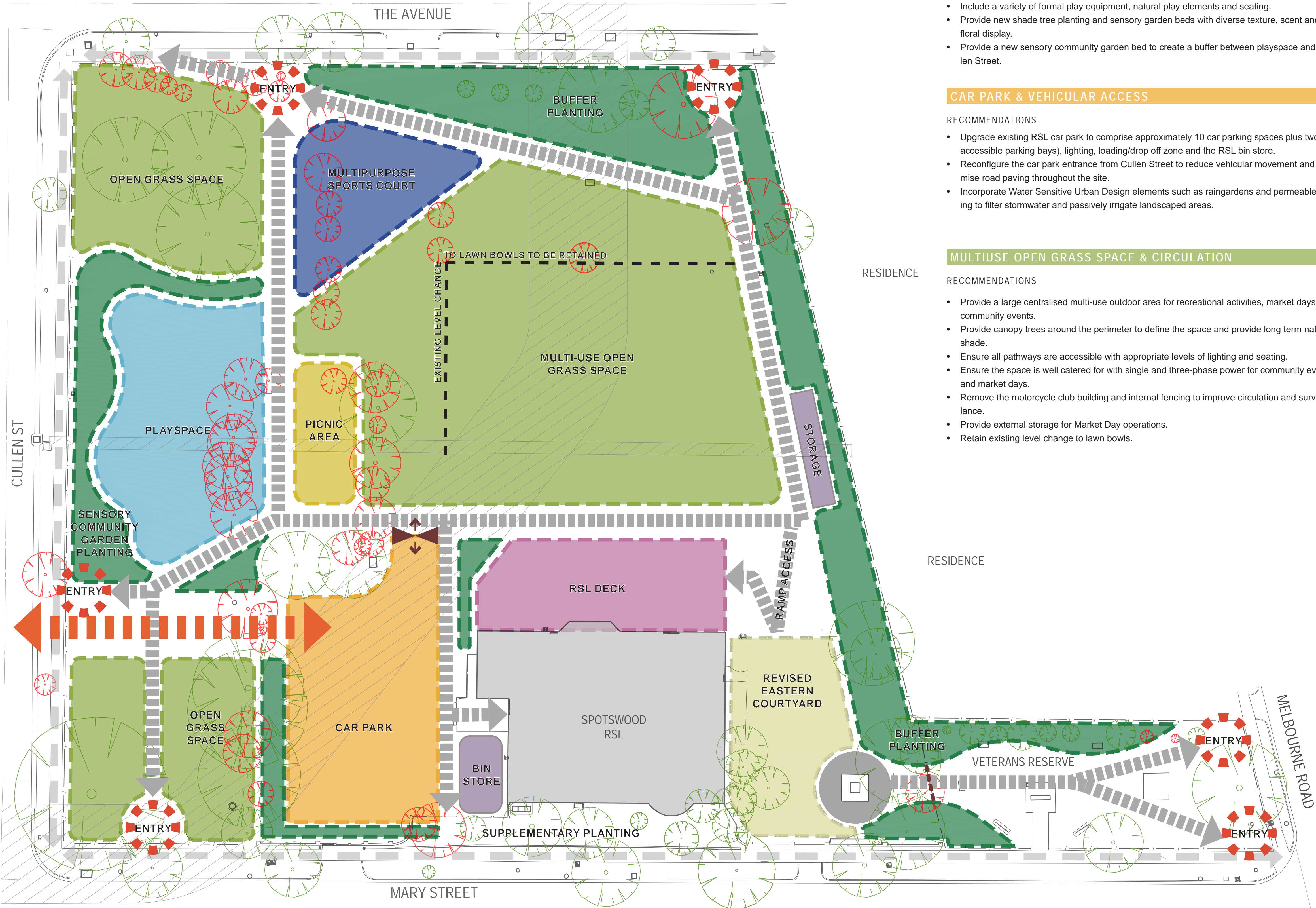
DECK

RECOMMENDATIONS

- Provide a deck as a break out space from the RSL building with tiered seating overlooking the reserve . Consider integrating an outdoor sink and bench into the design.
- Ensure the deck is integrated with the reserve and achieves DDA compliant access from the park level to the deck level.

LEGEND

- Existing tree to be retained (High/ Medium Arboricultural Value)
- Existing tree to be removed (Poor health/ Low Arboricultural Value/ Short Life Expectancy)
- Existing Pedestrian Path
- Proposed pedestrian paths (min 2m wide)
- Proposed vehicular road with priority pedestrian crossings (6.4m)
- Proposed vehicular access gate
- Proposed pedestrian access gate



PICNIC AREA



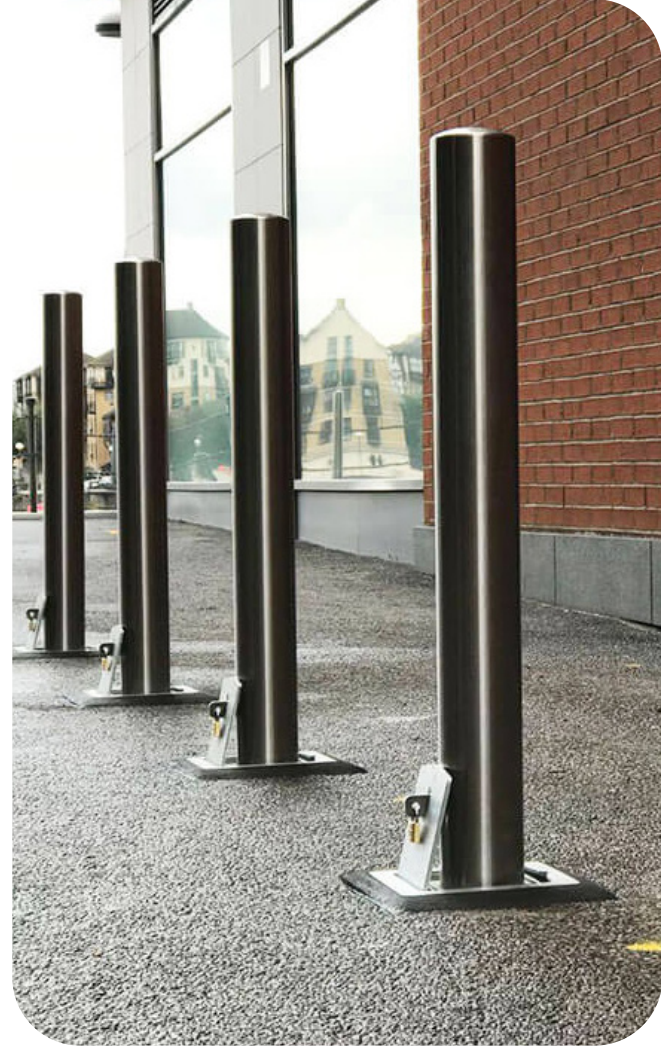
BASKETBALL HALF COURT



ENTRIES



CAR PARK & RSL ENTRY



PROJECT NO.	ISSUE	STATUS	DATE	ISSUE	STATUS	DATE
2223	A	FOR REVIEW	23.11.22			
	B	FOR REVIEW	23.01.23			
DRAWING NO.	C	FOR REVIEW	10.02.23			
2223-SA9	D	FOR REVIEW	20.02.23			

PLAYSPACE



OPEN SPACE



BUFFER PLANTING



DECK



PROJECT NO.	ISSUE	STATUS	DATE	ISSUE	STATUS	DATE
2223	A	FOR REVIEW	23.11.22			
	B	FOR REVIEW	23.01.23			
	C	FOR REVIEW	10.02.23			
	D	FOR REVIEW	20.02.23			
DRAWING NO.						
2223-SA10						