

**DENNIS
RESERVE
2018 DRAFT
MASTERPLAN
CONSULTATION
RESULTS & ADVICE**

Community Feedback Summary - TENNIS COURTS

Consultation conducted Oct-Nov 2018

Summary	Submitter	Community Feedback	
		Strengths	Weaknesses & Uncertainty

= Submitter has more than one comment in that topic

Tennis courts - number & design

11 submitters expressed broad approval for the proposed tennis courts. Of these - 5 imply that they are much needed - 3 note their approval of the alignment/layout in particular	Submitter 22	The new tennis courts are welcome and a much needed facility	
	Submitter 23	Extra courts Not much else	
	Submitter 48	The number of tennis courts is increased to four.. at best the number of courts from two to four is a plus.	
	Submitter 49	The inclusion of four new courts is great	
	Submitter 02	I strongly support the need for 2 more tennis courts in that area.	
	Submitter 07	The enlarged tennis courts,	
	Submitter 45	Good utilisation of space Improving tennis facilities	
	Submitter 21	Maximising space for 4 courtsand bringing together separate open area	
	Submitter 26	Increased tennis courts, improving long term viability of existing club and supporting court shortage	
	Submitter 44	more courts of which are badly needed	
	Submitter 47	Four tennis courts are needed to meet the clubs needs.	
	Submitter 39	Great! love the idea of Tennis Courts running along the East side of providing we can replace the exiting [existing?] trees to the east boundary.	
	Submitter 46	The master plan makes better use of the space on the reserve by aligning the tennis courts parallel to one side of the reserve and by making available space previously allocated to the ladies bowls club for tennis courts.	
	Submitter 40	the tennis courts layout.	
2 submitters not satisfied that the courts are not exactly oriented north-south	Submitter 47		Tennis courts not north/south facing which is ideal.
	Submitter 09		Tennis Courts need to be constructed in a North/South direction for compliance with National and International Standards
8 submitters expressed broad disapproval of the expanded the tennis courts	Submitter 29		enlargement of tennis court, encroaching on public, passive green spaces. This is EXPANSION not an upgrade - we don't all use this public space
	Submitter 28		expansion of tennis courts
	Submitter 37		The Master Plan needs to be amended, with no more than 2 tennis courts (preferably 0) on site
	Submitter 15		[not clear what they're referring to] Language in the keys features states RECONFIGURATION of exisiting courts NOT major expansion !
	Submitter 05		Too much space devoted to Tennis.
	Submitter 06		Expansion of the tennis club to four courts - which removes open PUBLIC space, and is a totally inappropriate use of this land.
	Submitter 19		[the space occupied by the redundant bowling green] Shame it's then lost again with 2 additional tennis courts
	Submitter 27		The tennis courts are too large and taking up valuable crown which the public could be using as passive space.

Summary	Submitter	Community Feedback	
		Strengths	Weaknesses & Uncertainty

Tennis courts - necessity & location

8 submitters express scepticism regarding the necessity of the extra courts in Dennis Reserve. Of these: - 5 imply that existing courts in the local area could be better utilised instead - 2 are sceptical of the self-reported data from Tennis Australia	Submitter 15		Tennis Australia is self reporting- any sports club could self report "we need more space, more facilities, more.....
	Submitter 16		HBCC have pushed ahead with the two extra courts on the basis of self reported data in the Tennis Needs Analysis and with the urging of Tennis Australia who should not have a say in how this community accesses public land. If the tennis club is financial perhaps they can be encouraged to purchase some land away from Dennis Reserve for extra courts with the assistance of Tennis Australia.
	Submitter 04		The building of additional tennis courts is a contentious issue and must be justified according to survey.
	Submitter 48		The current courts are not used by the public - and are often not used at all.
	Submitter 08		We do NOT need more tennis courts in Williamstown. There are so many already from Bayside to Liston to the ones next to the football ground - probably more I don't know about.
	Submitter 14		Tennis needs can be accommodated elsewhere,
	Submitter 11		What as [an?] opportunity missed; the local tennis community could work together to more sensibly use the many tennis courts across the municipality and make more public green space for renters and ratepayers.
	Submitter 12		There are many disused or under-utilized courts in the area.

Summary	Submitter	Community Feedback	
		Strengths	Weaknesses & Uncertainty

Tennis courts - privatisation & prioritisation

<p>8 submitters assert that a higher priority is being granted to the tennis club at the expense of the broader community.</p> <p>Most highlight the comparatively small number of tennis players that will benefit and subsequent imbalance of the offering.</p>	Submitter 32	Struggling to see the strength in the proposed plan. Try as I can - its lost on me. I guess it would be good for people who like to play tennis.	
	Submitter 48		As the mother of a toddler living near this reserve I am very upset about the proposed development of this precious open space. It is the only park I have within walking distance and I would like to feel that local residents were being given priority. To see that instead of this, a small tennis club is being doubled in size makes me very angry.
	Submitter 42		priority in terms of space given to small number of tennis players compared to the very large group of people who use this park on a daily basis
	Submitter 35		Allowing unfettered access to many in the community will serve more people than the limited number who belong to a tennis club.
	Submitter 12		I do not feel four tennis courts are in the best interests of the Hobsons Bay community. The tennis needs survey revealed that a minority of residents play tennis and they all reside in Williamstown (or overwhelmingly so).
	Submitter 34		Having participated in the master plan process, I am underwhelmed and confused by the draft master plan. It offers so little to 98% of the local community of Dennis Reserve, and so much to the 180 (approximately) members of the Williamstown Central Tennis Club, most of whom drive to the reserve.
	Submitter 36		I am entirely unsatisfied with the process applied to put into tennis courts: the data do not support the conclusion: Tennis Australia is not the decision-maker in municipal affairs. The Club has 160 or so members, the competition may swell that a few times a week to 200, however this seems to ignore the tens of thousands of people who could use external space and amenity - soaring in a rapidly densifying Williamstown.... Organised sport, whilst growing based on sheer volume of residents, is still losing share of public recreation activity, and is fast becoming a lesser societal past-time, organised activities yes, but sport no. What a shame to lock this in and then realise we missed an opportunity to suit so many more people. 'If there was an opportunity to protest this Plan completely and to reverse the decision, to listen to resident requirements rather than external bodies to the municipality with agendas that exclude non-tennis players, then this is it. Please don't proceed with this plan.
	Submitter 16		Closing off an area of public land and continuing to make it available to a small section of the community for sporadic use does a disservice to the larger community.
	Submitter 37		The aesthetics of a shared environment and the preservation of common spaces helps create a sense of community and belonging for citizens of Hobsons Bay and Williamstown locals. Having a small group of people have a disproportionately high impact on the community I think, seems very undemocratic and this is especially so, so close to the Williamstown Town Hall a bastion on local government democracy.
<p>11 submitters raise concerns about the privatisation of the space.</p> <p>- Potential limitations (financial, timing) placed on public access to the tennis courts</p> <p>- Negative visual connotations of a fenced off space in a public park</p>	Submitter 36		Locking the whole place under 2 more courts that exclude the majority of people, will limit use to perimeter walking, dis-allowing people to engage in outdoor environments that potentiate health and have long lasting future ramifications.
	Submitter 38		Will the new courts be available for public use?
	Submitter 18		I don't believe there are any free courts available in Williamstown so to promote greater take up of the sport by kids and promote a healthy lifestyle for local I think they should be free to access, or even a small fee via a booking system. To join the club as a family is expensive and some don't want that commitment.
	Submitter 08		Dennis Reserve is intimately linked to the old town hall/library site on the other side of Ferguson Street. Together, this part of Ferguson street above the strip shops creates a 'civic precinct' - with libraries, childcare, senior citizens buildings, health care and parks for all citizens... Tennis courts end up becoming fenced off, occasionally used private spaces. It should be accessible to everyone in the community and the opportunity to use the buildings and facilities there better promoted to residents and ratepayers.
	Submitter 48		If the club needs to expand then they should move. Tennis courts are not appropriate in place of public green space.
	Submitter 37		The master plan presented here calls for more tennis courts on the site - more tennis courts in this community space means more very high wire fences that cut sight lines across the site and exclude the majority of the community from enjoying the space.
	Submitter 34		I do not think that HBCC has convinced the community that 2 more tennis courts for use by Williamstown Central Tennis Club members, and those tennis courts being developed for tennis ONLY, is the most appropriate use for the precious space available in Dennis Reserve.
	Submitter 15		[in HBCC Open Space Strategy] "A focus for this precinct is creating high quality PASSIVE open space" NOT FENCED, select entry open space accessible only by paying a fee and joining a club.
	Submitter 06		Tennis courts are not 'open space' they are restricted, fenced and more suited to another site.

Summary	Submitter	Community Feedback	
		Strengths	Weaknesses & Uncertainty

Tennis courts - singular use

<p>2 submitters are critical of the single-use nature of the tennis courts.</p>	Submitter 01		That the space lacks multipurpose. The tennis courts could also convert into much needed netball and basketball courts and be utilized by a broader range of Williamstown residents.
	Submitter 14		single use spaces – again in contradiction with HBCC OSS – plan release virtually no open space back to the community

Tennis court - management

<p>2 submitters question the management of the tennis courts in relation to public access, particularly</p> <p>- maintenance responsibilities</p> <p>- bookings</p> <p>- fees</p>	Submitter 09		Need to ensure that there is strong management procedures for 'Book-a-Court' to minimise competing interests between public/tennis club members access Who will be responsible for the upkeep of the tennis courts if there is public access (wear and tear; misuse etc)?
	Submitter 18		Not enough information about how the tennis courts will operate? Will they be free? Will I have to join the club?

Community Feedback Summary - OPEN SPACE

Consultation conducted Oct-Nov 2018

Summary	Submitter	Community Feedback	
		Strengths	Weaknesses & Uncertainty

= Submitter has more than one comment in that topic

Open space - general

11 submitters expressed broad approval for the proposed tennis courts. Of these - 5 imply that they are much needed - 3 note their approval of the alignment/layout in particular	Submitter 07	the open space	
	Submitter 40	improved open space	
	Submitter 45	Better open space	
	Submitter 47	Provides more usable open space.	
	Submitter 01	The increased green space.	
	Submitter 03	More green areas - both for relaxing, thoroughfare and play.	
	Submitter 39	The new layout appears to have crated a good area of open space which is largely internal - away from roads	
8 submitters expressed a broadly negative view about the provision of open space, particularly in terms of size and allowance for passive use	Submitter 05		Not enough space devoted to free range open space.
	Submitter 08		Reduction of open space.
	Submitter 13		The 'new play space' and "new open green space" appears to be no larger than half of one of the bowls greens.
	Submitter 20		Not enough passive landscape
	Submitter 29		- the amount of passive green space for the community does not seem to have been increased - the second park located near the proposed tennis court - is this needed? lets make the main park the best it can be and maintain the quiet, passive space (green, treed and shady)
	Submitter 19	Good to see the space occupied by the redundant bowling green being considered for passive open space. (Shame it's then lost again with 2 additional tennis courts)	Lost opportunity to create more open space as per Councils own Open Space Strategy.
	Submitter 25		Loss of opportunity to develop area with park site open space. The existing area cover the park is great. We are losing that at a time when the issue is more important then ever.
	Submitter 32		With hotter summers, we must protect public green areas, they provide shade, habitat and cooling 'sinks'. Tree-dominated greenspace offers greater heat stress relief when most required, reducing it is short-sighted and contrary to the concept of creating sustainable, comfortable, urban environments.

Open space - passive recreation

4 submitters view the masterplan as conflicting with the HBCC Open Space Strategy due to the limited area dedicated to passive open space.	Submitter 35		This [diminution of public open space in the reserve] is at odds with the Open Space Strategy of the City of Hobsons Bay and with its the acknowledgment of the importance of areas for passive recreation. As well as formal sporting activity being recognised both local and state governments include activities such as walking and riding bicycles as sport conducive to human health.
	Submitter 15		This document [HBCC Open Space Strategy] also clarifies that most of the open space is concentrated in coastal areas where local community competes with seasonal and regional visitors AND that in particular there is a lack of space for passive recreation!
	Submitter 36		I feel this is in conflict with Council's own Open Spaces Strategy; "quality passive open space with a range of settings and facilities to cater to the diverse local community...p103"
	Submitter 16		Too much space devoted to Tennis.
5 submitters observe that - previous community consultations have indicated a higher preference for increased public open green space for passive recreation - the masterplan does not adequately respond to this	Submitter 38		Initial consultations and community comment favoured the site be made into public open space or a community garden, and I believe this is still the view in the community. However, plans have now been put forward for two additional courts for the existing tennis club.
	Submitter 34		There have been a number of community consultations on Dennis Reserve - I have documentation from all of them. I cannot see how the community's aspirations for Dennis Reserve have been included into the draft master plan. Green open space for passive recreation appears to be lost to development in the draft. Green open space was consistently top of the list of aspirations of people participating in the consultations..
	Submitter 16		Overwhelmingly all the surveys conducted by HBCC showed a support for the return of open space to the community.
	Submitter 12		The community survey undertaken prior to the tennis needs assessment overwhelmingly asked for this area to be utilized as green open space. I feel the community needs to be listened to.
	Submitter 14		all surveys conducted by HBCC have community wanting open green space for passive recreation as number one request.

Summary	Submitter	Community Feedback
---------	-----------	--------------------

Open space - shortage

9 submitters are concerned about the shortage in public open space in the local area and view the masterplan as not helping to resolve this issue. Of these, 7 note specific concern about the increasing population density exacerbating the shortage	Submitter 32		The plan seems to encroach on what is already a small green space in an area that has few public green spaces.
	Submitter 06		In an area of Williamstown where there is no other parkland maximising public open space is critical.
	Submitter 35		Located in central Williamstown this Reserve offers one of the few open spaces in an area acknowledged to be significantly lacking in this amenity. At a time when there are plans mooted for increasing density (potentially six to seven storey developments) it is of concern that the Master Plan for Dennis Reserve actually proposes a diminution of public open space in the reserve.
	Submitter 16		The plan doesn't return any open space to the community. The plan seems at odds with the HBCC Open Space Strategy and data which identifies a shortfall of open space in this area of Williamstown. Many people lack access to a local park within 300 to 500metres of their homes. With more than seven multi storey developments, all with no garden spaces planned within close proximity to Dennis Reserve , there will be more pressure on what little open space does exist. The plan doesn't look to look address this shortfall. "A likely by product of increased small scale development is the incremental loss of private open space and an increase in the demand for locally accessible open space. (p103 Open Space Strategy)"
	Submitter 15		On page 103 paragraphs 2, 3 & 4 of the HBCC Open Space Strategy it states that population density in W'stown & W'stown Nth brings the amount of AVAILABLE open space down below the municipal average of 2.9 hectares per 1000 people. This is decreasing rapidly as more and more plans for apartment buildings in the local area are passed. Burkes cnr, Rose Hotel and Foodies are 3 sites within 400 mts of Dennis Rsve.are
	Submitter 17		It misses an opportunity to increase the amount of open space in a part of Williamstown experiencing an increase in housing density and the number of people relying on public open space (e.g. the redevelopment of the RSL across the road and, at some stage, the hot wings site).
	Submitter 11		Public open space in a growing municipality is precious. Its loss, as laid out in the master plan, will decrease public amenity. The surrounding area - and the whole of Williamstown - is experiencing increasing population density, making it even more important to use this opportunity to create extra green space for all, rather than two more tennis courts.
	Submitter 12		The area of Williamstown surrounding Denis Reserve needs this green open space, particularly as apartments are due to be erected on the surrounding streets in the near future.
	Submitter 14		HBCC's own Open Space Strategy recognises a shortfall of green space in this area of the municipality, increase in residents with more than eight high rise /multi unit developments in the immediate area of the site
	Submitter 16		Green space for passive recreation and relaxation can only ever be provided in situ and it's very unlikely that HBCC will ever be in the position to purchase land if any became available in the immediate area. The release of the Ladies Bowls club land back to the wider community as an area of parkland for passive recreation is a unique opportunity for the Council to provide for the open space needs of residents within 500 meters of their homes and workplaces
	Submitter 36		No disagreement that we are needing more sports grounds, but we also need more informal recreational space that cannot be found once this space has been claimed under the Tennis Club- where will HBCC get more land from for the thousands of residents moving in to apartments whether up and running, in the pipeline or under construction now? ...I feel that this Plan just does not address modern day Hobsons Bay. Many people are living in smaller spaces and passive-viewed or actively sought out open spaces are critical

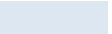
Open space - incremental loss

2 submitters are concerned about the incremental loss of public open space in the local area	Submitter 15		Loss of passive space... Loss of accessible open space... The ongoing EROSION of PUBLIC, ACCESSIBLE, PASSIVE, OPEN SPACE is totally inappropriate and short sighted.
	Submitter 36		as a partially related aside: there doesn't seem to be much public understanding as to why the "Horse Paddocks" did not eventuate to provide a sporting mecca like the Casey Playing Fields, so it seems a missed opportunity that now results in our citizens losing small pockets in ad hoc/bits'n bobs which does not sort out the huge squeeze on facilities

Community Feedback Summary - BUILDINGS

Consultation conducted Oct-Nov 2018

Summary	Submitter	Community Feedback	
		Strengths	Weaknesses & Uncertainty

 = Submitter has more than one comment in that topic

Existing Buildings - Senior Citizens Building

6 submitters encouraged retention of some or all of the existing Senior Citizens Building. Historic character is valued.	Submitter 32		The site is of historical significance: - In a community where the arts are thriving, the demolishing of the Senior Citizen building seems short sighted. Venues of this type (close to Town Hall, library and train station are coveted as exhibition, gathering and performance spaces. Vintage 1950, there are few architectural examples of this era. There are other municipalities who would give their eye teeth for such a cluster of publicly available, interesting and versatile spaces.
	Submitter 38		I propose the hall of the existing building be retained and renovated with the addition of new amenities, i.e. new kitchen, supper room, toilets and change rooms.
	Submitter 10		I would want to encourage retention of part of this [senior citizens] building eg: main hall for its potential heritage value, -- 50s, golden mean eara, seniors purpose build to some extent by the seniors club at the time then maintained by the club till early 2000. The dance floor is unique, and the northerly windows are important for the natural light they offer.
	Submitter 16		The Senior Citizens building appears to one of the few buildings of its era in the municipality - it seems shortsighted to demolish a building that could be restored and renovated (investigations already carried out) .
	Submitter 14		Senior Citz building (plan to knock down and rebuild with a tennis pavilion attached) -- embodied energy -- 1950's building -- almost no building from the era survive. Building can be repaired -- investigation already undertaken.
	Submitter 36		disregard to history of the site:... the Senior Citizens building should not be demolished to be "gentrified"

Existing Buildings - Ladies Bowling Pavilion

Removal of Ladies' Bowling Pavilion: - 2 submitters saw this as a good thing. - 6 submitters saw this negatively, with 2 questioning whether its heritage value has been assessed.	Submitter 36		disregard to history of the site: the Ladies bowls Building... should not be demolished to be "gentrified"
	Submitter 41		Not providing an upgrade to the existing bowling club rooms.
	Submitter 14		Ladies Bowling Pavilion of historical interest -- should be restored
	Submitter 32		The site is of historical significance: - Ladies Bowling Pavilion should be assessed for it historical value
	Submitter 16		The Edwardian Ladies Bowling Club Pavilion contributes to the heritage value of the site and it would be regrettable to see it demolished.
	Submitter 19		Have other options in regards to restoring existing buildings (Bowls Pavilion) been looked into? Shame to lose what appears to be a heritage building that fits within the character of the area.
	Submitter 12	Removal of the ladies bowling club	
	Submitter 13	The defunct Ladies Bowls Club looks very sad. Although i'd rather see it replaced with trees and be an inviting space for all of the community	

New Community Centre - General Positivity

12 submitters expressed generally positive sentiments re the new community centre. One of these also encourages partial retention of the old building (see above)	Submitter 05	Improvements to buildings	
	Submitter 40	a new community building	
	Submitter 47	New community building is much needed.	
	Submitter 49	The new multi use facility is great along with a central open space for public use.	
	Submitter 10	Mixed use and sensors [seniors?] building to be converted to a community centre.	
	Submitter 33	Firstly, it is very exciting to see that the community building is to be retained.	
	Submitter 26	Shored citilisation [shared utilisation?] of new buildings	
	Submitter 35	The Master Plan does allow for continuation of important community activities now carried out in the Senior Citizens building.	
	Submitter 29	improvements of senior citizens buildings --> and access to	
	Submitter 44	better senior citizens club	
	Submitter 45	Improvising [improving?] Senior Citizens facilities	
	Submitter 03	The public toilet facilities are excellent too.	

Summary	Submitter	Community Feedback	
		Strengths	Weaknesses & Uncertainty

New Community Centre - Size & Configuration

Regarding overall size of the new community centre: - 1 submitter supportive of minimising the building footprint - 1 submitters concerned it may not be big enough for all users	Submitter 09	Having a community facility that can be shared by multi users to maximise facility and minimise footprint on the reserve	
	Submitter 46		The size of the proposed new multi purpose hall/community facility appears small. As it is proposed the new facility will accommodate the tennis club as well as existing users such as the Loom Room, and perhaps others, a full assessment of users needs should be undertaken to ensure the requirements of all user groups are met and sufficient resources are provided to construct a facility to meet these.
5 submitters concerned that not enough detail is provided, particularly re. internal allocations of space.	Submitter 38		The plan for the new multi-purpose building does not give any detail or size?
	Submitter 22		Hopefully this size of the new Senior Citizens/Tennis Club facility will be divided into areas for each group
	Submitter 47		Council did not have any plans or ideas about layout of new community building.
	Submitter 02		The master plan is short on details regarding layout of the new building.
	Submitter 38		The plan lacks details for the public toilets

New Community Centre - Sharing of Facilities

8 questioned how the new community centre will be shared between the various user groups, particularly the senior citizens and the tennis club. Of these, 1 doubts it will be successful unless the Tennis Club has its own private facilities.	Submitter 06		Clarification is required on the community building, as it seems to be also acting as a club house for the tennis club. As the current elderly citizens building is being
	Submitter 13		What does 'multi-purpose community building' mean? Who will be permitted to use the building? The diagram on the plan shows no details of the building.
	Submitter 35		What does 'multi-purpose community building' mean? The diagram on the plan shows no details of the building. Who will be permitted to use the building and under what conditions?
	Submitter 38		Will the tennis club use the new/renovated Senior Citizens building as their club rooms? If so will this compromise the use of the building by the Senior Citizens and other users of the building?
	Submitter 40		I know this has not been finalised, but I am interested in the layout of the community centre and how "sharing" of facilities will be a success.
	Submitter 48		I would also like more detailed information about the new community building. Will this be usable by all the community groups that use the current building, or will this be for the tennis club?
	Submitter 51		Unknown access for the tennis club in the new multi use facility.
	Submitter 49		We have our doubts about the workability of the sharing of the proposed new building between the Elderly Citizens and the Tennis Club unless the Tennis Club has its own facilities (kitchen/toilets etc.) separately and is self contained and secured for Tennis Club members only. Club members could then be responsible

New Community Centre - Specific User Needs

Tennis Club requires storage and display facilities	Submitter 09		[re meeting current needs of competition in the construction of new tennis courts] - The tennis club has a designated area of the new facility to hang flags/memorabilia and some storage capacity for coaching equipment etc
Loom Room requires high level of natural light in new building	Submitter 33		As a member of the Loom Room, the strongest request for the rebuild is to retain the level of natural lighting that the building has. This is essential to the work that gets undertaken and can not be replicated with overhead lighting. The latter provides an adjunct to natural light only. The natural light allows for close, detailed work to be undertaken without shadow. Artificial light also impacts adversely on colour and texture, all important elements of our work.

Community Feedback Summary - MOVEMENT & SAFETY

Consultation conducted Oct-Nov 2018

Summary	Submitter	Community Feedback	
		Strengths	Weaknesses & Uncertainty

= Submitter has more than one comment in that topic

Pathways - general

Mixed responses to the inclusion of new paths. - 2 supportive - 4 perceive them as impinging on green space	Submitter 12	New paths	
	Submitter 05	New pathways	
	Submitter 04		The reduction of open space grassed areas due to the installation of unnecessary pathways is a loss to the users [users] of the Reserve.
	Submitter 14		extra pathways also impinge on green space,
	Submitter 28		too many paths
	Submitter 03		The current gravel paths around the heritage tree/garden is too big making it not easy to walk or ride on. This space could be used much better. It is rarely used at present. Perhaps consider removing the paths and making it either an expansive grass/ green area to kick a ball or a more attractive relaxing garden.

Pathways - materials

- 1 submitter supportive of the material selection - 3 submitters concerned about path material selection and how this impacts drainage	Submitter 38	I agree with the new granitic sand paths and the new perimeter path connection	
	Submitter 29		pathways - must be soft surfaces to allow rainfall absorption
	Submitter 13		Is the new continuous path along Melbourne Rd to be a hard surface? If so, where will the water drain to?
	Submitter 35		If the new continuous path along Melbourne Rd is to be a hard surface where will the water drain to?

Lighting & safety

Apparent hydrandgeas are perceived by one person to be dangerous.	Submitter 03		The hyderangers [hydrangeas?] along Lyons Street are currently dangerous.
Mixed perceptions of lighting & safety - 2 concerned about impacts of light spill on neighbours - 2 acknowledged importance of lighting for safety	Submitter 12	New... lighting	
	Submitter 03	Increased safety.	
	Submitter 41		Increase the lighting of paths for night use.
	Submitter 51		Potential impacts that lighting may have on nearby residents.
	Submitter 07		the path lighting if lit up to bright, the tennis court lighting if on past 10pm

Crossings & access points

2 submitters raised general concerns about the safety and legibility of unsignalised crossing points into the site, particularly: - where pedestrians should cross Lyons St - pedestrian paths terminating at the road without a formal crossing	Submitter 03		Pathways and access. There are several access points at present where the path leads to Melbourne Road, but there is no driveway/gutter to guide you to where the path actually goes. What happens when you walk through from Melbourne Road to the shops. Where do you want people to cross Lyons Street? Please improve the safety of the Pedestrian crossing at the end of Perry Street. Cars are parked too close and sometimes cars cannot see children. Please improve how people exit Dennis Reserve both at Melbourne Road (Perry and Ferguson and Pasco ends) as well as crossing at Lyons Street. Limit the places you want people exiting and really invest in that access point.
	Submitter 07		The location as to where the walking path meets Lyons Street
Better access noted by 1 submitter	Submitter 03	Better access points. The extra little joining path near the bowls club is also good.	

Summary	Submitter	Community Feedback	
		Strengths	Weaknesses & Uncertainty

Pathways - Melbourne Road edge

Re. the new path along the Melbourne Road edge of Dennis Reserve: - 3 submitter supportive - 2 submitters see new edge paths as superflous to footpaths already on the opposite sides of the road	Submitter 38	I agree with the new continuous path along Melbourne Road.	
	Submitter 06	Installation of a pathway along Melbourne Rd frontage	
	Submitter 03	The lit pathway along Melbourne Road is excellent.	
	Submitter 31		The proposal to put a footpath in along the Melbourne Rd Edge of the park is a waste of money and resources. The opposite side has a very wide, very ugly expanse of pavement already. By putting in more concrete we are again reducing the cooling potential of green space, trees. If the pavement proposed does go ahead council should compensate the residents by putting in a nature strip on the other side of Melbourne Rd and doing some PROPER street planning.
	Submitter 42		There are no existing pathways down the southern (triangle) end of the reserve. Why add pathways? There is not sufficient space for them amongst the existing trees and they would reduce the size of open space. Additionally, in the southern triangle area, the majority of people walk across/through the reserve from Lyons Street to Melbourne Road and vice versa. Users of the playground drive to the facility or walk down the very adequate pavements along Melbourne Road and Lyons Street then cross over the road.

Existing Central Path - Melbourne Rd to Lyons St

4 submitters expressed support for retaining and improving the existing central path running east-west.	Submitter 01	The improved lighting along the existing pathway linking Melbourne Rd and Lyons Street.	
	Submitter 38	I agree with the wider path and new lighting along the path between Melbourne Road and Lyon Street.	
	Submitter 06	Improvement of the open space areas along the path linking Lyons St and Melbourne Rd.	
	Submitter 46	Maintaining the path from Lyons Street to Melbourne Road in its current location is good.	

Space between tennis courts and back fences

2 submitters oppose the loss of the pathway through this space	Submitter 29		loss of pathway connecting to Ferguson St along peppercorn trees
	Submitter 49		The land between the courts and the housing fences should be retrieved as a pathway providing a pleasant thoroughfare through to Ferguson Street (as it is at present)
4 submitters perceive this as an undesirable loss of land	Submitter 13		The space to the east of the courts (the strip of land between the courts and the houses) which is to be 'planted out' means there will be no open space available
	Submitter 35		The space to the east of the courts (the strip of land between the courts and the houses) which is to be 'planted out' means there will be no open space available there.
	Submitter 23		Loss of hand [land?] Aprox East of New Tennis Courts as this area will be fenced off
	Submitter 42		The area between the tennis courts and the rear of the houses... is actually a substantial (and larger) amount of space that is lost to park users in order to accommodate the tennis courts. Can you assure rate payers that home owners backing on to this space will not be able to gain this area through Adverse Possession
2 submitters concerned about the safety of this sapce	Submitter 42		The area between the tennis courts and the rear of the houses is still a major safety concern. This will be more of a problem if the area is more heavily vegetated.
	Submitter 10		Safety issues of the path alongside the tennis courts. Narrow with apparently no lighting and very narrow. Is it safe

Community Feedback Summary - PLAYGROUNDS & OTHER ELEMENTS

Consultation conducted Oct-Nov 2018

Summary	Submitter	Community Feedback	
		Strengths	Weaknesses & Uncertainty

= Submitter has more than one comment in that topic

Playgrounds

1 submitter opposes an apparent reduction in play space	Submitter 08		Reduction of play space.
General positive sentiment re playground upgrade by 3 submitters	Submitter 07	the upgrade of the existing play equipment	
	Submitter 18	kids playground will receive a much needed upgrade	
	Submitter 40	The playground area with the enhancement elements of shade and the equipment looks like a good improvement	
	Submitter 36	acknowledgement of alternative users beyond Tennis Club users, as intimidated by addition of a playground, albeit tiny.	
The general idea of two playgrounds - supported by 1 submitter - opposed by 9 submitters The location of the playground received mixed responses (see below).	Submitter 42		Two playgrounds would be a great idea as this would spread the usage and provide experiences for different age groups.
	Submitter 19		Not sure why we need 2 playgrounds in the one park. Playgrounds are expensive to maintain and resources would be better spent improving some of the existing playgrounds we have or replace missing Date Palms in the avenue.
	Submitter 03		Two playgrounds are not necessary. One shaded safe good playground would be better than 2. Please decided on one playground area and invest in that one. Kinder children use the space a lot after sessions. I know the park and frequent it a lot.
	Submitter 28		second, unnecessary playground
Only improving the existing playground supported by 3 submitters	Submitter 01		Rather than having two small playgrounds that both provide minimal equipment to play on. Money would be better spent making the existing playground bigger.
	Submitter 07		the new play equipment that abuts 27 Lyons Street
	Submitter 38		If the existing play area at the southern end of the garden is renovated and reconfigured it would not be necessary to create a new somewhat smaller space near the new courts. This area could be part of the new open green space area.
Relocating the playground supported by 3 submitters - safety concerns - proximity to the kindergarten - proximity to parking	Submitter 15		Not condensing the playground into one safe area to the rear of the kinder on previous ladies bowling green, rather than creating a second playground and leaving the narrow space toward the point (and dangerous road space)
	Submitter 06		The continued placement of a playground in the triangle at the southern end. This has always been an inappropriate place for a playground as it is dangerously close to both busy roads and a major intersection. The redesign of Dennis Reserve should have been an opportunity to remove the playground from this inappropriate area and place it further to the north (instead of adding more tennis courts!!). The playground really should be closer to where the kindergarten is, where there is on street parking and where it is safe. Fencing or screening the playground is NOT the answer. It's what you do when you don't have an option (and you do)
	Submitter 48		I would have hoped that his was an opportunity to move the current playground from it's very dangerous location at the southern end to where the Ladies Bowling Club currently is. Installing 'landscape' barriers' is just a sop. The current playground is plain and simply in the wrong location.
6 submitters in total expressed concern over the safety of the current location of the playground. - 2 suggested barriers around existing - 4 advocated relocation rather than barriers (see above)	Submitter 29		safety of children's park. rather than fencing in or leaving open to Melbourne Rd, should be 'enclosed' by green perimeter
	Submitter 16	If the current playground is to be retained the idea of enhancing it and creating a greater safety barrier between the equipment and the road is a good idea.	

Furnishings

3 encouraged more seating, particularly near areas of activity such as the playground	Submitter 16	Much more seating [around current playground] that would allow people to sit and enjoy the space around the play equipment would be wonderful.	
	Submitter 41		Increase seating along the paths/playground/community building
	Submitter 36		lack of any spaces for seating in a park, no slowing down and using the open space, just paths that are around the perimeter: longer/noisier/not what pedestrians want in a park
1 request for more detail on playground & boundary design	Submitter 42		Can you elaborate on how the existing playground will be updated? Will it use more space; what equipment will be built/retained; what form will safety perimeter take?

Summary	Submitter	Community Feedback	
		Strengths	Weaknesses & Uncertainty

Alternative uses

1 does not support fountains	Submitter 42		It was mentioned that this southern triangle will be beautified by the addition of features such as fountains. This is not appropriate for this reserve.
2 Submitters propose alternative uses: - café - community garden	Submitter 08		Why don't we have a community garden there a la St Kilda? I can think of many other better uses for the area.
	Submitter 26		lost opportunity to make area service more rate payers. eg. cafe in garden
4 Submitters highlight the need to cater to user groups from outside Dennis Reserve, particularly older children / high school students	Submitter 03		Some equipment for older kids is also required.
	Submitter 16		Workers in the area and school groups using the town hall are often looking for open spaces nearby to enhance their visit. The plan should aim to provide much needed space for teenage members of the community (proximity to Williamstown High School) who are currently underserved for passive outdoor space at which they are made welcome.
	Submitter 32		This space is enjoyed as a corridor between the housing and retail area and is especially used by Williamstown High School students. Our teenagers need green spaces to gather.
	Submitter 36		No alternative use apart from commute-type walkers on those peripheral paths for those who like to play basket/down/handball on a multipurpose 1/2 court set up such as outside Melbourne Museum in Exhibition Gardens. What a great place for young citizens to come and play/meet/feel like they are valued

Parking

6 respondents express concern about insufficient parking provision, 2 of whom questioning its specific location	Submitter 15		Parking is already an issue in the vicinity.
	Submitter 08		Lack of parking.
	Submitter 42		no allowance for car parking
	Submitter 35		There is no space specified in the Plan for accessible parking for the new community building.
	Submitter 13		Where on the plan is the space for accessible parking for the new community building?
Re the location of ancillary parking - 2 respondents imply that it should not displace potential open green space in the reserve - 1 respondent advocates retaining it on the reserve	Submitter 38		The plan lacks details for the access to accessible parking? Where will the parking area be? Presently there is off street parking near the Senior Citizens building off Melbourne Road, will this be retained?
	Submitter 49		Land between the proposed new Elderly Citizens/Tennis Club building and Melbourne Road should have an area for car parking.
	Submitter 46	Maintaining open space on the reserve is good rather than allocating it to car parking	
	Submitter 48		There is also mention in the Draft Master Plan of 'accessible parking' at the community building - but this is not shown on the Master Plan. If this parking is going to be on the reserve then that is yet more green space that is not available for the public. And it is wrong that the Mater Plan does not show this.

Community Feedback Summary - TREES & LANDSCAPE HERITAGE

Consultation conducted Oct-Nov 2018

Summary	Submitter	Community Feedback	
		Strengths	Weaknesses & Uncertainty

= Submitter has more than one comment in that topic

Heritage - general

Regarding general heritage approach: - 1 submitter supportive - 1 submitter critical, (not consistent with HBCC Open Space Strategy)	Submitter 40	Keeping the heritage elements	
	Submitter 15		(in HBCC Open Space Strategy) The doc also refers to conservation areas and heritage values that should be interpreted, protected and celebrated..... Each of these points appears to have been overlooked in the Dennis Rsve MP!

Heritage - original design intent

6 submitters are critical that the masterplan is not consistent with original intent of Dennis Reserve, particularly: - it was established as a passive botanic garden - sporting facilities are inappropriate and steadily encroaching over the years	Submitter 35		The Dennis Reserve was originally gazetted as public open space and gardens of botanic significance were planted there.Over the 20th century there has been an increasing erosion of this space and the plantings by construction of sports facilities and buildings.
	Submitter 15		Activating the reserve with more active sporting facilities, when this site was designed for and remains an opportunity to expand/recreate a passive open space is totally inappropriate. The botanic gardens seems to be the only quiet space for those seeking refuge in quiet, passive, local, green spaces. As a child I walked and played in this park with my grandmother and parents. I have seen the huge trees cut down so that the 2nd bowling green could be introduced. I have seen the hedge along the western border removed to allow more light onto the green (replaced by a gravel path going nowhere) there is a "public path" through the 2 greens- I'm happy to offer to walk with anyone and show them how "Accessible" and "Public" this path is.
	Submitter 19		Why do we need more sport (Tennis Courts) in what should be a neighbourhood reserve? Tennis should be accommodated in a Recreation Reserve not a local park. There is far too much emphasis on sport in Hobsons Bay rather than passive
	Submitter 16		The Dennis Reserve was once an important public garden that over the years has seen a well documented steady encroachment and expansion of sporting interests to the detriment of other uses and users. In the 1993 City of Williamstown Conservation Study the authors state "It is one of Williamstown's tragedies that these Gardens were not maintained as they were created."
	Submitter 17		It is a poor plan that fails to recognise the history fo the site or to realise its potential for service the broader community, not just the interests of sporting clubs. The plan fails to recognise the hertiage values of the site and the potential to re-create the balance between public garden and sporting reserve that existed before construction of the ladies bowling green.
	Submitter 36		I see space that was historically used by womens Bowls Group, prior to this function, used to be Public Land, therefore I feel that a return to the Public is the best use of this land, and a reflection of maturity of decision makers understanding pubic sentiment, over the real overbearing influence of sport, as it is just one microcosm element of our Region, and should not swamp the chance for many more people to benefit.

Summary	Submitter	Community Feedback	
		Strengths	Weaknesses & Uncertainty

Memorial palm trees

4 submitters value the retention of the memorial palm trees, 3 of whom are concerned as to whether enough is being done to protect them	Submitter 38	I agree with retaining the existing Canary Island Palm trees.	
	Submitter 35		The palms in the Reserve are the remnant ones planted in memory of some of the men who died in WW1. Why is preservation of these not detailed in the Master Plan? *There are established trees along the intended path. How will they be protected in the building of a path?
	Submitter 16		The Canary Island Palms on the Dennis Reserve are an avenue of honour - the trees being planted for local men lost in WW1 (along with other palms across the town, now removed!) - more than 50 palms were documented as being planted at Dennis Reserve - around 23 remain - the proposed perimeter path comes very close to the base of the remaining palms - damaging these trees is unthinkable.
	Submitter 13		There are established trees along the intended path. How will they be protected in the building of a path? Is the Council aware that the palms in the Reserve are the remnant ones planted in memory of some of the local men who died in WW1?
4 submitters advocate reinstating memorial palm trees that have been removed in the past.	Submitter 14		Site is of historical significance – avenue of honour palms – some missing, they should be replaced
	Submitter 15		There is no reference to replacing the significant palm planting to commemorating fallen soldiers.....what a wonderful legacy the reinstatement would be!
	Submitter 32		The site is of historical significance: - avenue of honour palms, planted in 1920 (ceremony attended by by Crs. Liston, Fowler and Dennis). This Avenue should be restored.
	Submitter 50		In 1920, 52 Palm trees were planted on the perimeter of this V shape reserve to commemorate the local lives that were lost in World War 1. Palm number 19 was for my grandfather, Archibald Fowler's (former solicitor for City of Williamstown) cousin: Pte. John Orton Fowler (son of Cr. Alfred Fowler). Ref: The Williamstown Chronicle contributors. Memorial palms planted. Soldiers of Centre ward. 1920 May 8:2. [Internet]. [7 Dec 2018]. Available from: https://trove.nla.gov.au/newspaper/article/69689080 ? Since then it appears a number of Palms have been lost. It is nearly a century since this living memorial was established. Would it be possible for our planners to include restoring the number of Palms, so that these could be in place in 2020.

Trees & planting - General

Regarding the provision of new trees, opinion varied - 3 appreciating the additional trees - 4 comments implying that Council should be doing more to green the local area	Submitter 19	Additional Tree Planting is welcome.	
	Submitter 36	planting of trees as part of the plan	
	Submitter 28	I appreciate that the council is willing to plant more trees	not enough planting
	Submitter 41		Need to plant more trees and scrubs [shrubs?]
	Submitter 19		It's obvious when walking around Williamstown that we are falling behind other Councils by not planting enough trees and we are falling behind most other Melbourne Councils.
	Submitter 31		I am sick and tired of hearing that council has a plan for greening the suburbs but never seeing any real sign of planning. In fact we are hard pressed to look after street planting effectively now - lack of watering, lack of cutting back suckers, lack of proper protection in early stages of planning
Regarding existing trees - 1 viewed the masterplan as having limited impact - 2 disapproving of tree removal	Submitter 49	limited impact on trees	
	Submitter 28		removal of existing trees
	Submitter 29		loss of mature trees enabling tennis court expansion
1 submitter seeks more detailed information on trees	Submitter 42		Can you clearly indicate location of existing trees on the plans - current drawings are inaccurate. Can you indicate which existing trees will be maintained, which will be removed, what new trees will be planted and where?

Community Feedback Summary - PROCESS & DELIVERY

Consultation conducted Oct-Nov 2018

Summary	Submitter	Community Feedback	
		Strengths	Weaknesses & Uncertainty

= Submitter has more than one comment in that topic

Masterplanning process

Importance of masterplan development acknowledged by 1 submitter	Submitter 14	The development of a masterplan for a city park is extremely important.	
5 submitters were unhappy with the time taken to masterplanning process. Of these, 3 submitters see Council as being indecisive.	Submitter 43		Wished this had happened years ago!
	Submitter 44		Council's unlikely to reach a decision on it
	Submitter 21		Pretty short on detail and 4-6 year implementation too long. Especially given the procrastination of council last few years
	Submitter 45		This time taken (7 years+) to get to this logical outcome. I vote for councillors to make decisions - not to delay for 7 years. Entire process has been driven by hidden agendas.
	Submitter 47		No firm time line - this has already taken years to get to this stage.
2 submitters suggest removing fences and allowing public access to the Ladies Bowling Club greens while the lengthy planning process continues.	Submitter 34		With regards the staged nature of the re-development of Dennis Reserve, I ask that the fences around the Ladies' Bowling Club site be removed and the building be fenced off (which is to be demolished) so that the community can use the open space while planning takes place for the master plan proper.
	Submitter 38		The closure of the Williamstown Ladies Bowling Club occurred when they combined with the adjacent Men's Bowling Club. The site has been vacant for seven years, which is regrettable as it could have been utilised for some other activity during that period.
1 submitter optimistic about the next stages of the process	Submitter 34	I look forward to more positive discussion and action on how the master plan can be improved for the majority of the community.	

Inadequate engagement

Inconsistent approach to counselling complainants	Submitter 45		The complainants re open space have been allegedly 'counselled', yet those supporting improvement and an aged friendly facilities/health living etc. get ignored. Why?
Previous submitter not kept informed of the latest consultation opportunity	Submitter 45		I have been giving feedback about this proposal for close to 7 years. I have provided name, email, telephone and address details. Why was I not notified of this 'new consultation'? I was told by a member of the clubs involved.
Concern that seniors club users not being listened to in the early discussions, but optimism about future process	Submitter 33		I understand that the users of the building will be part of the process for the design of the new structure and I trust that these requests are valued, listened to and accommodated in this next stage. The work, time, discussions and thinking that has been contributed by this group into the redesign of the reserve has already been energetic and informed. This is partly due to our concern that the principles of open access and people seeking places of skilled and knowledgeable interaction were not being listened to, or even heard in the early discussions.

Demolition & construction period

8 submitters expressed concern about disruptions to facilities during the construction period, specifically - 2 re. loss of existing tennis courts - 1 re. appropriateness of integrating tennis club with Bowls Club - 3 re. buildings	Submitter 51		Lack of facilities for the Williamstown central Tennis Club during construction.
	Submitter 26		Time taken to build new facilities (loss of occurs clearing build
	Submitter 02		It will disrupt the tennis club by destroying the existing 2 courts. This will have an impact on other clubs and WRTA and WSNTG.
	Submitter 09		Need to consider the current needs of competition in the construction of new tennis courts - we are already hiring courts outside the municipality at an expense.
	Submitter 24		Stage 1- States temporarily relocate tennis club into Bowls Club! Why? There will be no tennis facilities until end of Stage 2. What facilities/resources would the tennis club want. The bowls club is a licences club this would have a bearing on the use by underage people. Why not put a "ATCO-HUT" on the park site for the use of tennis clubs. Tennis club could use elderly citizens club until it is demolished "Tennis Club wont exist until the end of stage 2
	Submitter 33		I firstly wish to clarify the language on the plan which has in Stage 3 the 'demolition of the senior citizens centre and relocate users to another facility offsite'. I have presumed this is a temporary relocation and that the current users would return to the newly developed building... I am sure we will look forward to this next stage and trust that the space and building that is used for temporary accommodation whilst the building is occurring is as short a period of possible.
	Submitter 35		'Where will the present users of the building be located to during the demolition and building process?
	Submitter 13		'Where will the present users of the building be located to during the demolition and building process?

Summary	Submitter	Community Feedback	
		Strengths	Weaknesses & Uncertainty

Cost & demolition

5 submitters generally concerned about cost. Of these specifically: - 2 advocate retaining the existing Senior Citizens building - 1 sees extra tennis courts as misallocation of funds	Submitter 08		Demolition of existing infrastructure.
	Submitter 02		It will certainly be the one of the most expensive proposals
	Submitter 17		Demolishing a large and serviceable building that serves all of the community (and that the community say they are happy to use) and replacing it with a smaller, less flexible building primarily serving the tennis club's needs in terms of its location and orientation ignores community sentiment expressed at the public meeting some years ago, and fails to optimise existing resources.
	Submitter 23		Costs, Budgeted? It could be [be?] done now for little [little?] Cost Learning [leaving?] Central Building Palling [pulling?] down ladies Bowling Club and returning this round, possibly Playground, leave the seniors Building for another 10 years
	Submitter 36		The cost of this plan seems to a huge impost: millions of dollars for these extra courts, which no doubt will limit HBCC's ability to respond to other open spaces/tree plantings/parks. We are already struggling with tree cover in Hobsons Bay, just one example of what can't be done as it won't fit in the budget.
4 submitters prefer retaining the existing tennis courts due to cost	Submitter 48		The current plan requires the existing courts and clubhouse to be demolished (a crying shame).
	Submitter 30		keep the existing 2 courts upgrading or not and add 2 non courts considerably loss expensive prefer North South location if possible
	Submitter 26		Additional costs to remove existing courts of 200K, rather than just adding two courts
	Submitter 09		Cheaper to build two new courts and leave the current courts

Funding - courts

3 submitters questioned who will be funding the project, particularly tennis facilities.	Submitter 38		Who will be funding the construction of the new tennis courts?
	Submitter 42		How is this whole project to be funded? Is Tennis Australia contributing?
	Submitter 35		Finally what is the source of the funds for the new tennis courts.

Summary	Submitter	Community Feedback	
		Strengths	Weaknesses & Uncertainty

= Submitter has more than one comment in that topic

General upgrade positivity

6 submitters expressed general positivity that Dennis Reserve is being upgraded	Submitter 11	It is good that the area is being developed though see below for the weaknesses.	
	Submitter 15	Dennis Reserve finally receiving attention as park has not seen many \$\$\$ other than general maintenance	
	Submitter 18	Old Bowling greens are being upgraded	
	Submitter 04	Upgrading of old facilities on the Reserve.	
	Submitter 41	good to see the park being upgraded	
	Submitter 44	would actually make use of the space	

Miscellaneous negativity

1 submitter said there were no strengths	Submitter 08	At least it is not being developed into apartment housing. There are no strengths.	
--	--------------	--	--

Balancing user needs

11 submitters expressed approval of how the needs of different user groups are being balanced	Submitter 02	The plan balances the needs of the tennis club, elderly citizens and the open space supporters.	
	Submitter 03	Better use of space for all ages.	
	Submitter 09	Maximising active and passive recreation space	
	Submitter 20	Space for all including different zones and space for passive enjoyment	
	Submitter 21	Facilities for both Tennis Club and other groups	
	Submitter 41	Caters for the needs of several groups	
	Submitter 42	Better utilisation of space, tennis court and senior citizen facilities	
	Submitter 43	Much improved facilities for tennis, senior citizens and open space utilisation	
	Submitter 47	Good compromise in trying to meet every ones needs.	

Aesthetics & Character

Mixed opinions regarding general aesthetics and local character: - 2 submitters express positive views - 2 submitters express negative views	Submitter 47	Will visually look much better for all users of the area.	
	Submitter 30	Improving the tennis courts and still keep the character of the park and space	
	Submitter 15		Loss of visual amenity
	Submitter 37		Tennis courts, have a very high impact on the environment with their bright contrasting colours and high fences, while existing facilities such as the bowls club have a low 'visual impact' on the environment - even though I am not a member and am excluded from that space, their green lawns do not detract from the local environment.

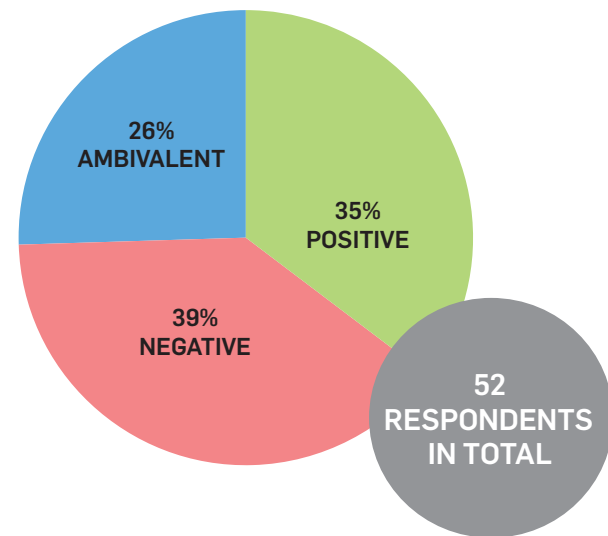
Other missing information

Timeline on website not up to date	Submitter 05		The time line history of the development of the plan on the website seems incomplete and stops around 2016
No reference on the website to other users of the Senior Citizens club other than the Senior Citizens gorup	Submitter 33		There is also no reference beyond the Senior Citizens group and the tennis club on the website yet the Conversations for the Curious group utilise this space two days of the week.
3 submitters expressed concern regarding a lack of details, particularly regarding - project timing - who participated in the sports survey	Submitter 02		The master plan is short on details regarding timings.
	Submitter 42		Re survey about what sports people play: How many people were surveyed? What is age break down of tennis players? How many tennis players are school aged students who play tennis at their schools, who don't play on Council owned courts?
	Submitter 35		The Master Plan is significantly short of important detail which should be provided to allow informed judgement of its proposals.
4 submitters seeking info on dimensions / areas	Submitter 27		No strengths as there are no measurements or length of buildings to be built or actual size of green space
	Submitter 35		There are no measurements on the plan for the public to determine how much space will be available. ' The 'new play space' and "new open green space" appears to be no larger than half of one of the bowls greens.
	Submitter 02		The master plan is short on details regarding court size
	Submitter 13		There are no measurements on the plan for the public to determine how much open space will be available.

ADDITIONAL TENNIS COURTS

A RELATIVELY EVEN SPLIT

across all submissions between positive and negative attitudes towards additional tennis courts.



COMMON CONCERNS INCLUDE

PRIVATISATION & FLEXIBILITY

- A higher priority being granted to the tennis club (a comparatively **small number of people**) at the expense of the broader community
- Fear that the space is being essentially **privatised**
- Criticism of the **single-use** nature

JUSTIFICATION

- Scepticism of the **self-reported data** from Tennis Australia
- Belief that **existing courts** in the local area could be better utilised instead
- Ignoring HBCC Open Space **Strategy**
- Ignoring **previous consultation** results

PASSIVE OPEN GREEN SPACE

- Growing **deficit** in the local area
- Placing greater **value** on this
- Being **lost** in favour of courts

PLAY & YOUTH PROVISIONS

OF THOSE WHO COMMENTED

9 OUT OF 10

ADVOCATED ONLY **ONE PLAYGROUND**, NOT TWO

Support for **retaining** the existing playground was mostly on cost/wastage grounds

Sentiments supporting **relocation** include

- Safety concerns in the current location
- closer proximity to the kindergarten
- closer proximity to parking

4 RESPONDENTS

HIGHLIGHTED THE NEED TO CATER FOR **OLDER CHILDREN / TEENS** AS WELL

BUFFER SPACE

7 RESPONDENTS

EXPRESSED NEGATIVE VIEWS ON **THE SPACE BETWEEN** THE TENNIS COURTS AND BACK FENCES

Issues raised include

- waste of land
- loss of the pathway
- safety concerns



LOWERED FENCES

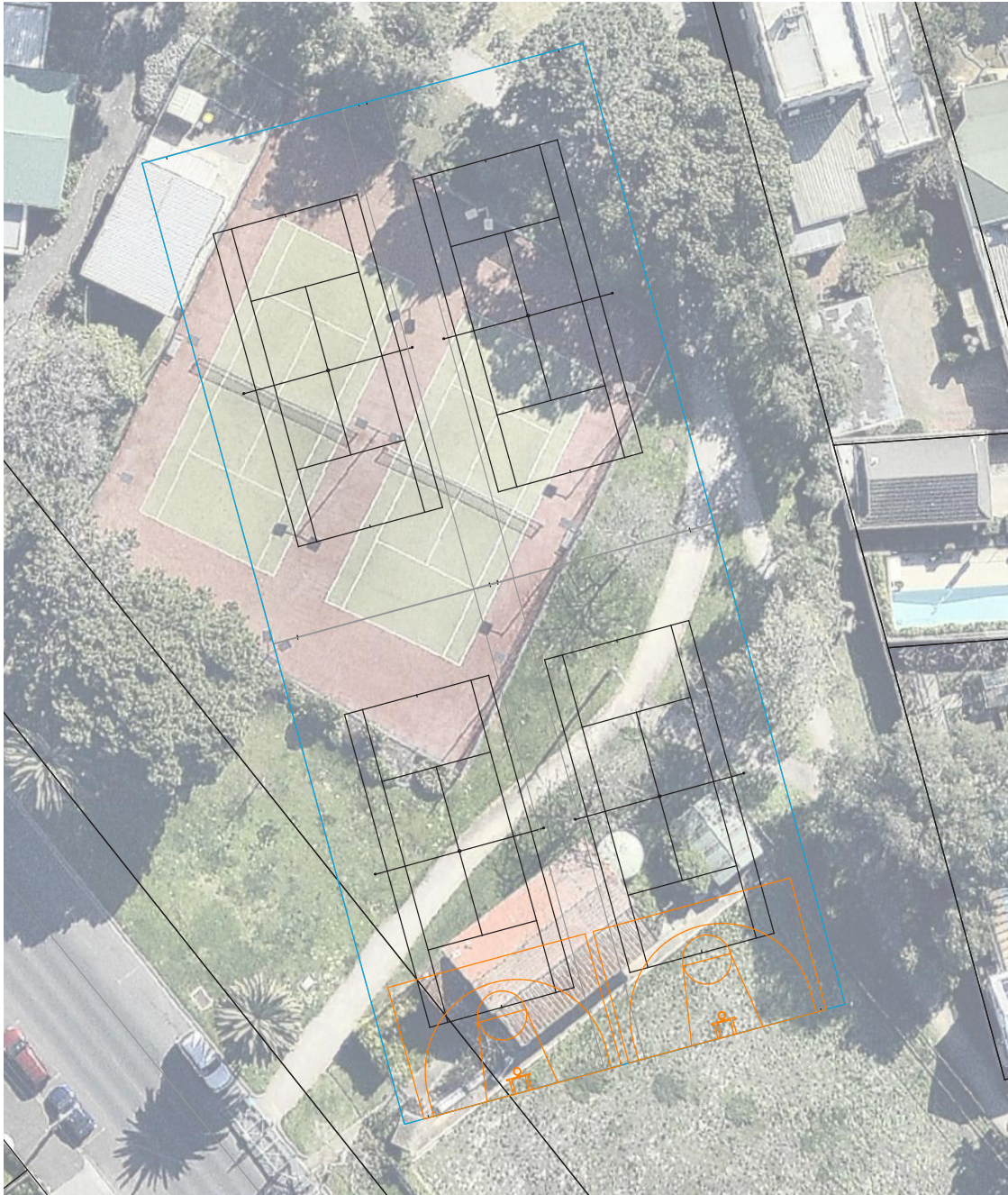
Suggestion: Provide lowered fences

Propose to provide fences that are lowered in the centre of the court, where there is a lower likelihood of stray balls escaping. They would be valuable on the western side, and potentially on the eastern side, subject to the design of the space between the courts and back fences (refer to p 4)

- ✓

Visually more inviting - helps to signal that these are public courts, not privatised spaces
- ✗

Occasionally not as effective in keeping stray balls within the court space



MULTISPORT FACILITIES

Suggestion: Provide multisport markings & hoops on two southern courts

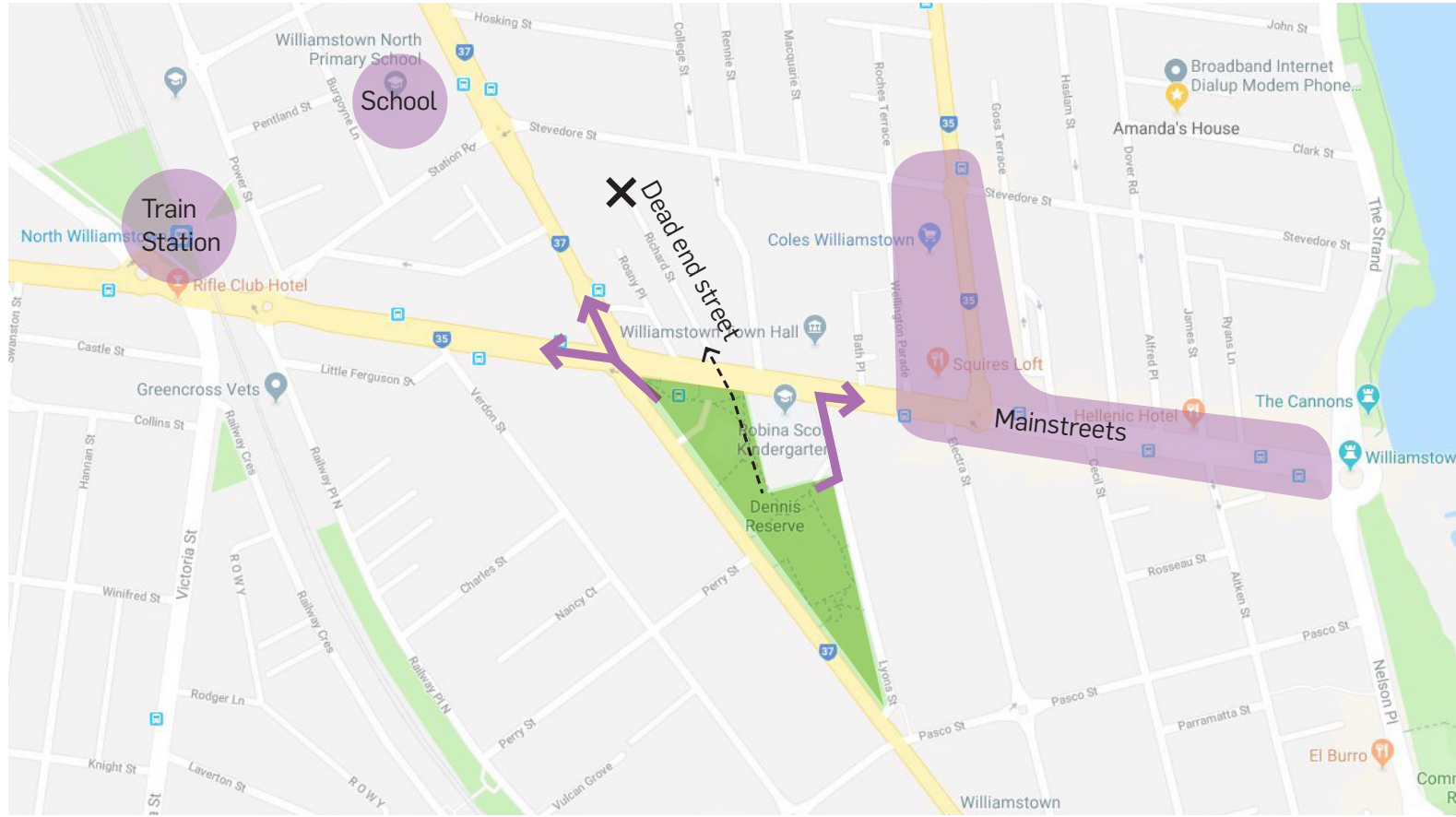
- Propose two multisport courts with
- Markings for halfcourt basketball and halfcourt netball, in addition to tennis
 - Basketball & netball hoops at southern end of courts
 - Sufficient buffer zones from formal tennis courts

- ✓

- Helps invite public use and expands the pool of potential users beyond the Tennis Club and people who enjoy tennis
 - Helps to address concerns about the single-use nature
 - Provides expanded recreation opportunities for older children / teenagers

- ✗

- Not preferred by the tennis club, however the will still have priority access during club times to all tennis courts onsite
 - May cause some confusion for players involved in high-standard competition



NOT TO SCALE

RETAINING THE PATH

Suggestion: Not necessary to retain from a pedestrian network perspective

- ✓ If a path is not provided along Melbourne Road edge, it may be valuable as an alternative
- ✓ It may be convenient for a small number of residents and people parked directly north of the site
- ✗ Major anchors for local foot traffic are northwest and northeast of the Reserve, not directly north, so it does not service these desire lines.
- ✗ This path would only connect up to a dead end street
- ✗ The path invites people to walk in an area which is more physically isolated and has comparatively less passive surveillance than alternative paths of movement (e.g. Lyons Street or proposed path along Melbourne Road).

For all options, tree retention is the same as per the current masterplan



FILL WITH LOW PLANTING

- ✓ Clear that this space does not invite entry, resolving safety concerns and removing dead end.
- ✗ May still be perceived as 'wasted space'.
- ✗ More convoluted entry to the rear of the adjacent properties.



Access to rear property entries would be provided via an informal gravel path which is inconspicuous and does not encourage casual use.



FILL WITH GRASS

- ✓ No dead ends, helps to resolve safety concerns
- ✗ May still be perceived as 'wasted space'
- ✗ Similar issues as per "Retaining the path Option" re. allowing access to an area with comparatively less passive surveillance
- ✗ Lack of clear purpose of the space not ideal for territorial reinforcement



GREEN SEATING ZONE IN EXPANDED FENCED AREA

- ✓ No dead ends
- ✓ Space is not constrained in a limited strip
- ✓ Not 'wasted space' since it can now be used for passive recreation and as a comfortable area for audience to watch
- ✓ Better passive surveillance since it is not cut off from the tennis courts & interaction between the spaces is possible
- ✗ Expanding the fenced area may not be received well by those who are opposed to the increased number of tennis courts. This may be eased by implementing the other recommendations to encourage public use.
- ✗ May be some extra challenges and expense integrating the fencing with the existing trees.

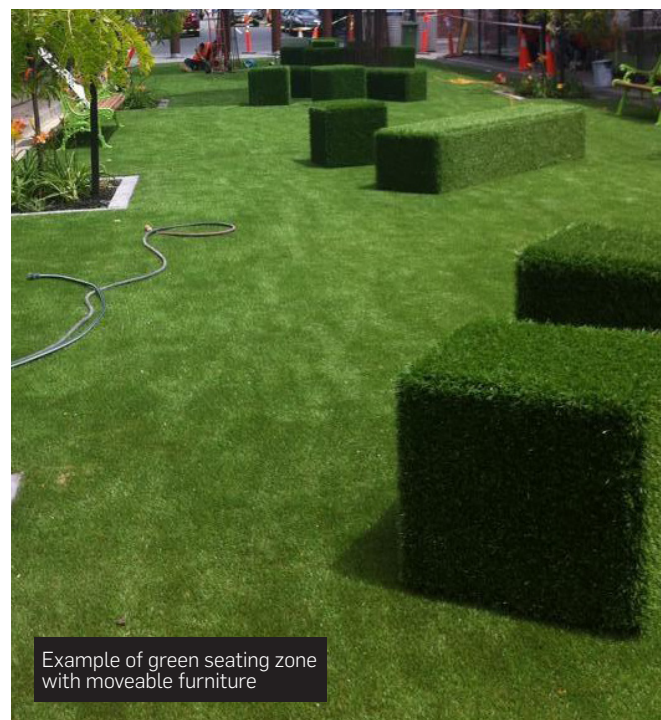
- Granitic sand
- Artificial turf with moveable seating (ease of maintenance)
- Groundcover plantings (low enough to allow for easy ball retrieval)
- Fence



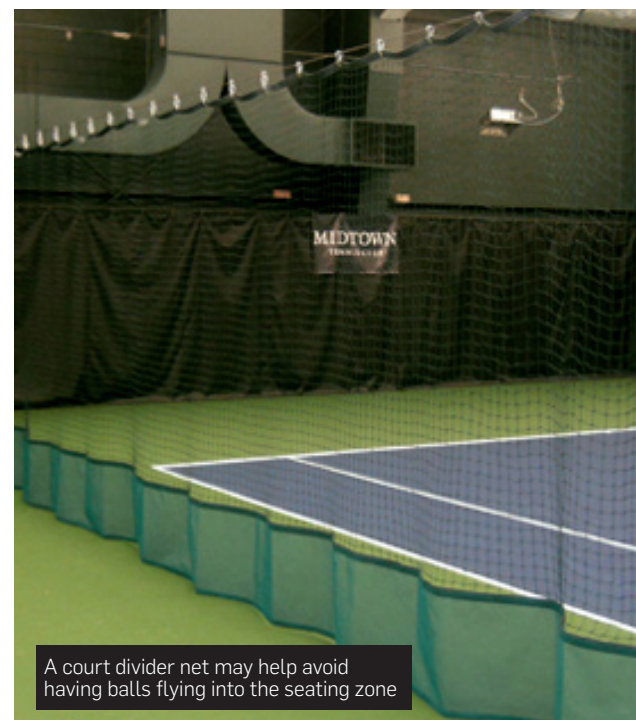
SEATING NODES OUTSIDE FENCED AREA

- ✓ No dead ends
- ✓ Not 'wasted space' since it can now be used for passive recreation and as a comfortable area for audience to watch
- ✗ Depending on design of the fence:
 - limited interaction between seating nodes and courts
 - Views from seating nodes may be interrupted by fence
 A lowered fence and gate on the eastern side would help resolve these issues.
- ✗ Similar issues as per "Retaining the path Option" re. encouraging access to an area with comparatively less passive surveillance, however this design does provide better territorial reinforcement.

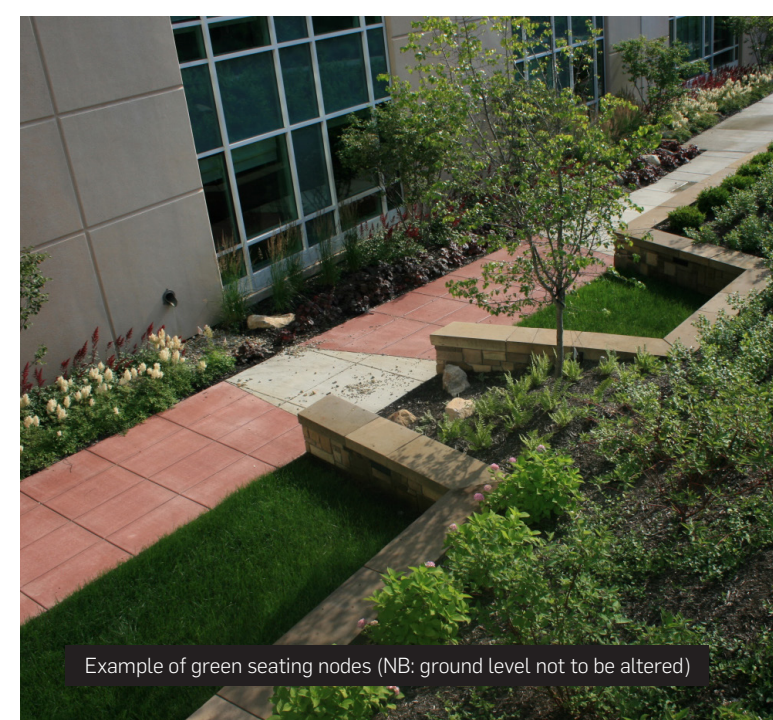
- Granitic sand
- Artificial turf seating nodes (ease of maintenance)
- Low plantings
- Fence



Example of green seating zone with moveable furniture



A court divider net may help avoid having balls flying into the seating zone



Example of green seating nodes (NB: ground level not to be altered)

FAQS

CAN THE COURTS BE MOVED CLOSER TO THE FENCE?

No, existing mature trees need to be retained and moving the court closer would intrude on the tree protection zones.

WHAT IS PASSIVE SURVEILLANCE?

This is a CPTED (Crime Prevention Through Environmental Design) principle that aims to keep potential offenders and intruders under observation through the creation of environments where there is sufficient opportunity for people engaged in their normal behaviour to observe the space around them.

WHAT IS TERRITORIAL REINFORCEMENT?

This is a CPTED principle which implies the use of physical attributes to express stewardship of a space. With good territorial reinforcement it is clear that someone cares about the space and it is designed with a clear purpose.

FOR BOTH PLANS

● = Indicative seating nodes / congregation spaces

Intended to appeal particularly to teens / older children

↔

Central path realigned to avoid doubling-up of paths at the eastern end and optimise the useable spaces

Tree retention is the same as per the current masterplan

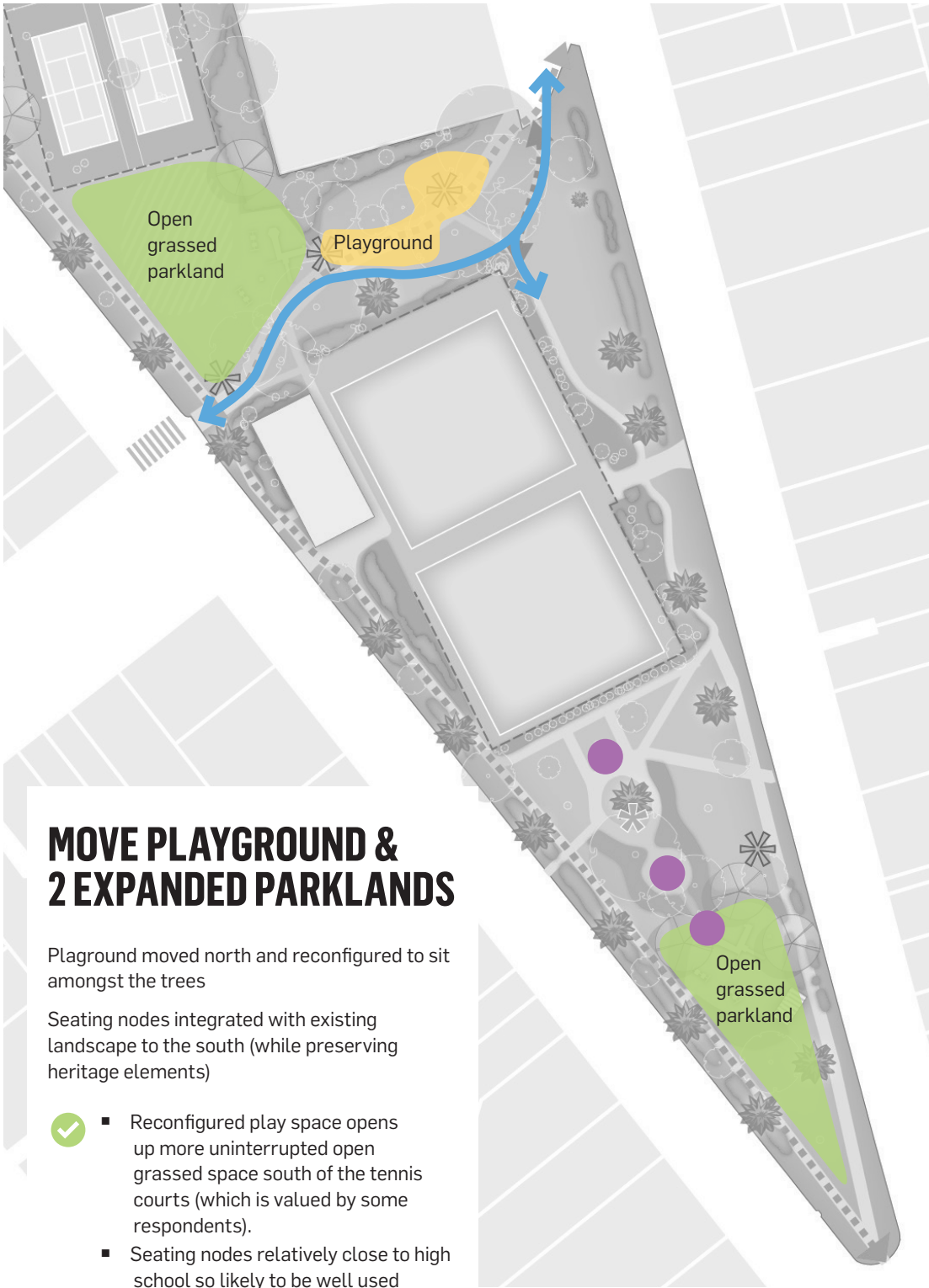


RETAIN PLAYGROUND & MAXED PARK LAND

South playground retained & enhanced as per current masterplan.

The central area of uninterrupted open grassed space is maximised

- ✓
 - Maximised uninterrupted grassed space may be appreciated by respondents who value and are concerned about this.
 - Likely to be less expensive than relocating the playground
- ✗
 - Playground may still be perceived as being unsafe even with landscape barriers
 - Seating nodes not as close to the high school



MOVE PLAYGROUND & 2 EXPANDED PARKLANDS

Playground moved north and reconfigured to sit amongst the trees

Seating nodes integrated with existing landscape to the south (while preserving heritage elements)

- ✓
 - Reconfigured play space opens up more uninterrupted open grassed space south of the tennis courts (which is valued by some respondents).
 - Seating nodes relatively close to high school so likely to be well used
 - Playground further away from 'living areas' of adjacent property
 - Playground in a location perceived to be safer
 - Playground closer to kindergarten
- ✗
 - More expensive than retaining existing playground location
 - Open grassed space more fragmented