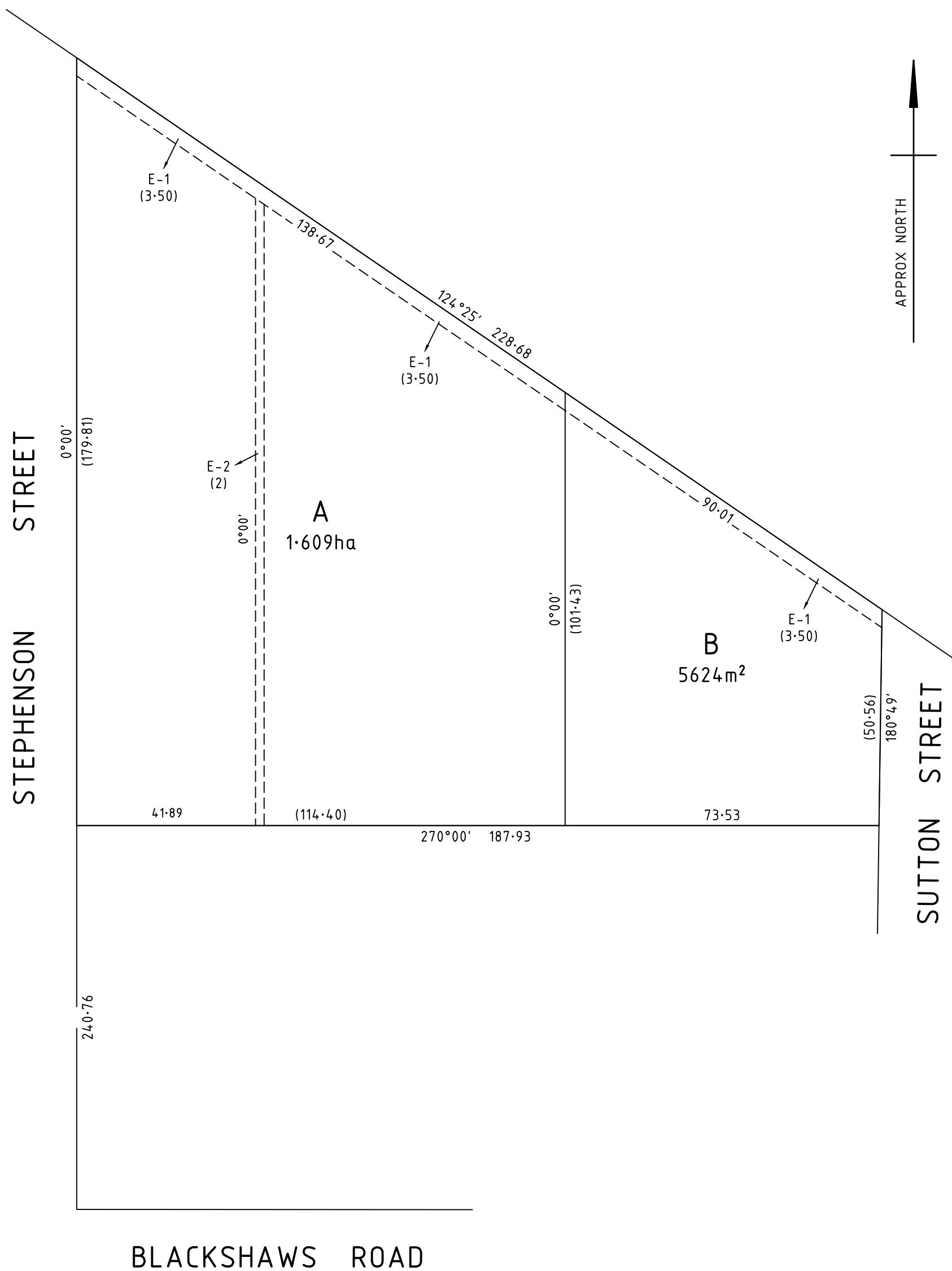


PLAN OF SUBDIVISION				EDITION 1		PS833940D	
<div>LOCATION OF LAND</div> <div>PARISH: CUT PAW PAW</div> <div>TOWNSHIP: —</div> <div>SECTION: 6 7</div> <div>CROWN ALLOTMENT: 18(PT)</div> <div>CROWN PORTION: B(PT)</div> <div>TITLE REFERENCE: VOL. 9735 FOL. 412</div> <div>LAST PLAN REFERENCE: CP163945E</div> <div>POSTAL ADDRESS: 41-59 STEPHENSON STREET</div> <div>(at time of subdivision) SOUTH KINGSVILLE 3015</div> <div>MGA CO-ORDINATES: E: 313 060 ZONE: 55</div> <div>(of approx centre of land in plan) N: 5 810 770 GDA 2020</div>				HOBSONS BAY CITY COUNCIL			
VESTING OF ROADS AND/OR RESERVES				NOTATIONS			
IDENTIFIER		COUNCIL/BODY/PERSON		<div>PRELIMINARY</div> <div>THIS PLAN IS SUBJECT TO APPROVAL FROM THE RELEVANT AUTHORITIES. LOT BOUNDARIES, EASEMENTS MAY BE AMENDED OR ADDED TO THIS PLAN.</div>			
NIL		NIL					
NOTATIONS							
DEPTH LIMITATION: Does Not Apply							
<div>This is a SPEAR plan.</div> <div>STAGING: This is not a staged subdivision. Planning Permit No.</div> <div>SURVEY: This plan is not based on survey.</div>							
EASEMENT INFORMATION							
LEGEND: A - Appurtenant Easement E - Encumbering Easement or Condition in Crown Grant in the Nature of an Easement R - Encumbering Easement (Road)							
Easement Reference	Purpose	Width (Metres)	Origin	Land Benefited/In Favour Of			
E-1, E-2 E-2	DRAINAGE SEWERAGE	SEE DIAG 2	THIS PLAN THIS PLAN	HOBSONS BAY CITY COUNCIL CITY WEST WATER CORPORATION			
<div><div>BW</div><div>Beveridge Williams</div><div>development & environment consultants</div><div>Melbourne ph : 03 9524 8888</div><div>www.beveridgewilliams.com.au</div></div>			SURVEYORS FILE REF: 1900276/B 1900276-B-PS-V1.DWG		ORIGINAL SHEET SIZE: A3		SHEET 1 OF 2
			LICENSED SURVEYOR: SEAN A O'CONNOR VERSION 1, DATE: 06/06/2019				



PRELIMINARY
SEE NOTATION ON SHEET 1