

# WALKING AND CYCLING

## CREATING A CONTINUOUS JOURNEY FROM WERRIBEE TO THE CITY

WEST GATE TUNNEL  
PROJECT



The West Gate Tunnel Project will deliver more than 14 kilometres of new and upgraded paths, making it safer and easier for more people to walk or cycle.

The project responds to feedback for more choices and better access by upgrading paths and building new off-road connections by:

- Completing missing links in the **Federation Trail** and **Kororoit Creek Trail**.
- A new **elevated veloway** giving cyclists a safe express route to and from the city.
- **Better links to popular trails.**
- **Connecting communities** with new paths over and under the West Gate Freeway.
- New off-road paths and bridges for a **safer journey**.

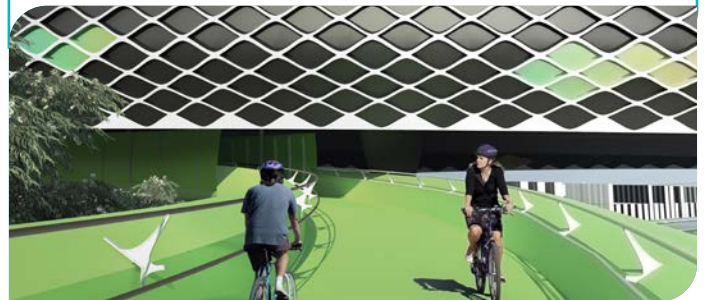
### The veloway – a cycling highway

A 2.5 kilometre veloway from Footscray to Docklands will provide an off-road route that removes six intersections for cyclists, making trips safer and quicker.

It runs from Shepherd Bridge to the city side of Moonee Ponds Creek. At four metres wide, the veloway allows plenty of room for the growing number of cyclists, and space to stop for a break or change a tyre.

#### The safety features will include:

- Two emergency exits with alarms.
- Emergency vehicle access into and through the veloway.
- Lighting.
- Full CCTV coverage, monitored by a traffic control center.
- A mesh cover and perforated side panels to let sunshine and fresh air through.



In partnership with:

Transurban

WEST GATE TUNNEL  
PROJECT

MAJOR  
TRANSPORT  
INFRASTRUCTURE  
AUTHORITY

VICTORIA'S  
BIG BUILD

VICTORIA  
State Government

# KEY WORKS

- 1 Completing the Kororoit Creek Trail between Grieve Parade and the Federation Trail.
- 2 Wider, well-lit paths under the West Gate Freeway at Millers Road and Williamstown Road and rebuilt pedestrian bridges over the freeway.
- 3 Completing the missing link in the Federation Trail with a new off-road path between Fogarty Avenue and Hyde Street and upgrades to the trail from Kororoit Creek to Fogarty Avenue.
- 4 A new path under the freeway connecting new open space, and future development sites Bradmill and Precinct 15, with the Federation Trail.
- 5 A new connection from the Federation Trail to Hyde Street Reserve and Spotswood Station.
- 6 Upgraded cycling facilities along Hyde Street from Somerville Road will improve safety, removing the need to use the Whitehall Street / Somerville Road intersection.



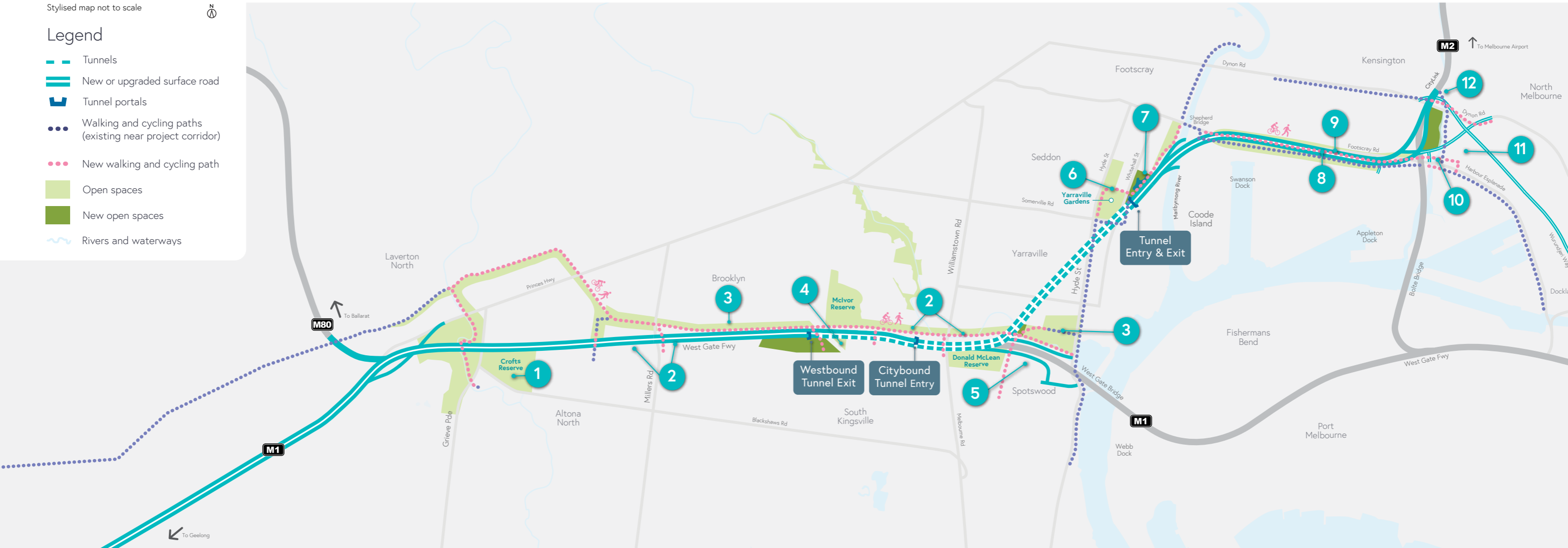
- 7 A new bridge over Whitehall Street will create a link between Yarraville Gardens and the Maribyrnong River.
- 8 Footscray Road path will remain available and feature new landscaping.
- 9 A new 2.5 kilometre elevated veloway will give cyclists an express journey completely separated from traffic, making this route quicker and safer.
- 10 The existing path on Footscray Road over the Moonee Ponds Creek will be upgraded to provide a wider and safer path.
- 11 A new bridge over Footscray Road will remove a dangerous and busy crossing.
- 12 A new pedestrian and cycling bridge at Dynon Road will make it safer and easier to cross Moonee Ponds Creek and the rail lines to link in to the broader cycle network.



Stylised map not to scale

Legend

- Tunnels
- New or upgraded surface road
- Tunnel portals
- Walking and cycling paths (existing near project corridor)
- New walking and cycling path
- Open spaces
- New open spaces
- Rivers and waterways





Artist impression of Moonee Ponds open space

## Construction overview

Following a comprehensive Environment Effects Statement (EES) process and approval from the Minister for Planning, construction commenced in early 2018.

During construction, our focus is on safety and on minimising disruptions to motorists, communities and businesses. We'll be working hard to minimise inconvenience to residents, motorists and truck drivers as we get the work done.

### Community Engagement Timeline

- ✓ 2015 Business case
- ✓ 2016 Concept design consultation and tender
- ✓ 2017 EES public exhibition
- ✓ 2018 Construction commenced

## Keeping you informed

We will keep people informed and work together to make things easier during construction.

You can expect to see regular information from us about construction activities happening in your area, including:

- Newsletters to keep you up to date.
- Works notifications in your letterbox.
- Door knocks or street meetings before major works.
- Information on the website.
- News and updates on social media.

We have a team that is dedicated to working with the community. They are available 24 hours a day, seven days a week to answer any questions or concerns.

**Our West Gate Tunnel Project Visitor Information Centre provides a one-stop shop for project information and enquiries.**

### SIGN UP FOR PROJECT UPDATES:

[westgatetunnelproject.vic.gov.au](http://westgatetunnelproject.vic.gov.au)

Follow us on social media



### CONTACT US

[info@wgta.vic.gov.au](mailto:info@wgta.vic.gov.au) | 1800 105 105

West Gate Tunnel Project Information Centre  
Corner of Somerville Rd and Whitehall St  
Yarraville VIC 3013



### Translation service –

For languages other than English, please call 03 9209 0147

Please contact us if you would like this information in an accessible format.

If you need assistance because of a hearing or speech impairment, please visit [relayservice.gov.au](http://relayservice.gov.au)