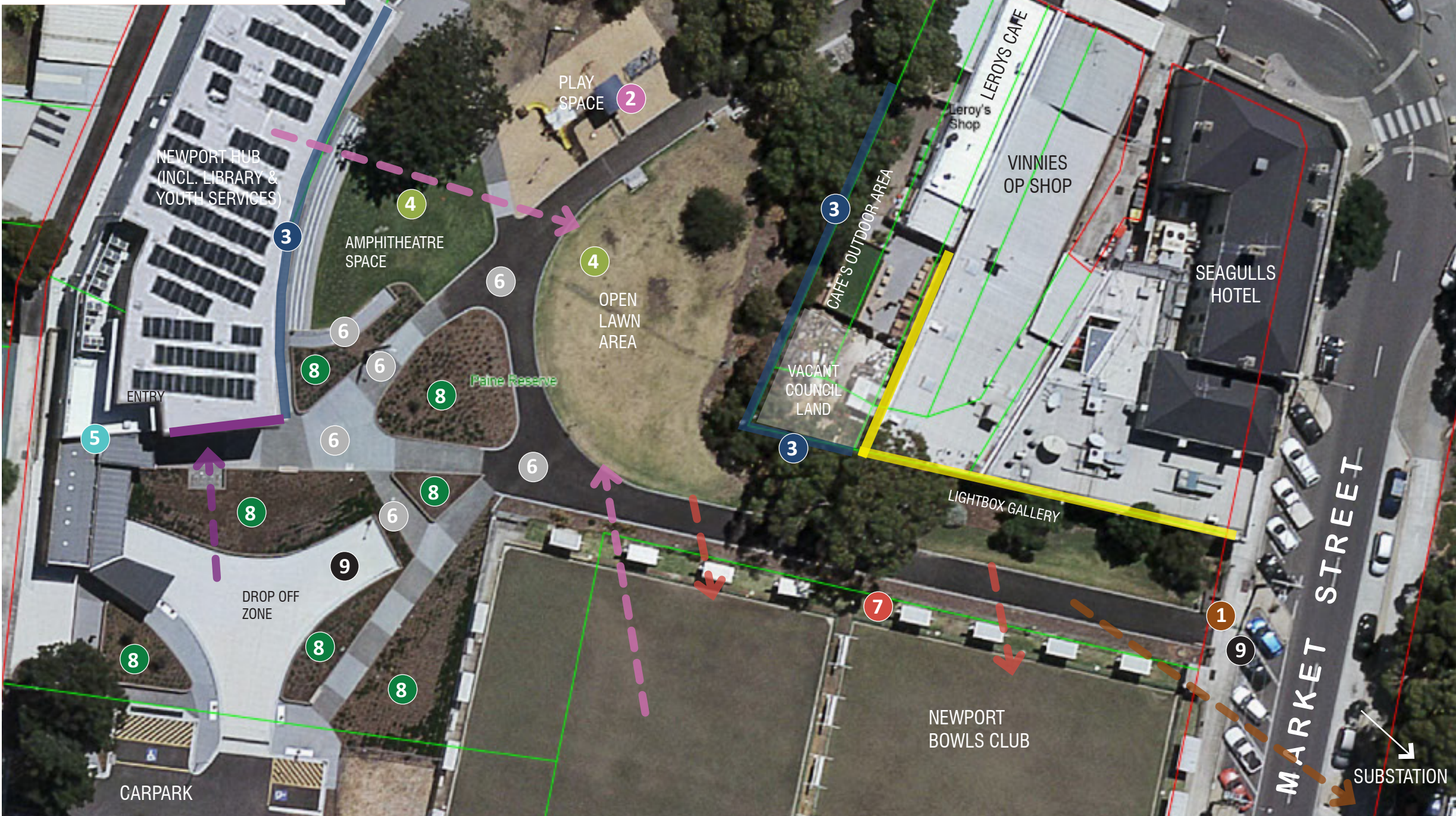




KEY VIEWS:

- ➔ View to the Substation
- HERITAGE building facades
- ➔ Long views into the Park
- ➔ Views into the Bowling Club from the Park - to be retained
- Closed edges/facades
- ➔ View to large blank wall



ISSUES & OPPORTUNITIES:

- 1 Improve the views from the street into the Park.** Currently it's cluttered with street furniture, low walls and poles. There is no strong identity to the main entrances from Market and Mason Street or to Newport itself.
- 2 Create more play opportunities for wider age groups.** The existing play ground caters for younger children only.
- 3 The edges to the Park are closed off** with border garden beds and the Hub appears closed rather than open.
- 4 The lawn areas can be improved.** There is no irrigation in some areas, the amphitheatre lawn has poor drainage and the paths cut through it. Fewer paths would create larger, open lawn areas while framing the edges of the spaces.
- 5 No hierarchy of entrances to the Library/Hub.** There are two but the North entry is the main one. The library wifi extends outside for outdoor study.
- 6 Many hardsurfaces.** There is a lot of under-utilised and excess hardsurfaces particularly the wide junctions of paths, the carpark drop off zone and a ramp duplicating a sloped path.
- 7 Tired bowling club fence.** Views into the greens should be maintained for visual interest and passive surveillance.
- 8 Some of the many raised garden beds take up potential use-able space.** Some are also performing poorly with lack of drainage and are difficult to maintain.
- 9 No access into the park for maintenance vehicles and event set up.**

OTHER THINGS:

- Inconsistent character in general.
- Clutter of street furniture, fire hydrant, low walls, random poles.
- Identity of the Park and the Newport Hub is not clear.
- Current layout does not have a logic or programming of spaces.

PAINE RESERVE LANDSCAPE MASTERPLAN

Site Analysis Plan

PREPARED: JUNE 2019 NOT TO SCALE

HOBSONSBAY
CITY
COUNCIL

